

Recombinant

DGRmAb®

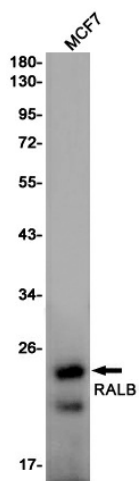
RALB (DGR13146) Rabbit mAb

db13214

Package : 10µL 20µL 50µL 100µL

Product Name : RALB (DGR13146) Rabbit mAb**Cat.No.:** db13214**Synonyms** : Ras-related protein Ral-B**Application** : WB**Reactivity** : Human,Mouse,Rat**Host species** : Rabbit

Background	This gene encodes a GTP-binding protein that belongs to the small GTPase superfamily and Ras family of proteins. GTP-binding proteins mediate the transmembrane signaling initiated by the occupancy of certain cell surface receptors. [provided by RefSeq, Jul 2008]
Immunogen	A synthetic peptide of human RALB
Gene ID	5899
Swiss Prot	P11234
Synonyms	Ras-related protein Ral-B
Reactivity	Human,Mouse,Rat
Application	WB
Recommended dilution	WB: 1:1000-1:5000
Calculated MW	23 kDa
Observed MW	23 kDa
Host species	Rabbit
Clonality	Monoclonal
Clonality No.	DGR13146
Isotype	IgG
Purity	Affinity Purification
Conjugation	Un-conjugated
Storage Stability	Store at -20°C. Supplied in 50mM Tris-Glycine(pH 7.4), 0.15M NaCl, 40% Glycerol, 0.01% sodium azide and 0.05% BSA. Stable for 12 months from date of receipt.



Western blot detection of RALB in MCF7 cell lysates using RALB antibody(1:1000 diluted).