

Recombinant

DGRmAb®

CYFIP1 (DGR13325) Rabbit mAb

db14678

Package : 10µL 20µL 50µL 100µL

Product Name : CYFIP1 (DGR13325) Rabbit mAb**Cat.No.:** db14678**Synonyms** : SHYC; SRA1; SRA-1; P140SRA-1**Application** : WB, ICC/IF, FC**Reactivity** : Human,Mouse,Rat**Host species** : Rabbit**Background**

This gene encodes a protein that regulates cytoskeletal dynamics and protein translation. The encoded protein is a component of the WAVE regulatory complex (WRC), which promotes actin polymerization. This protein also interacts with the Fragile X mental retardation protein (FMRP) and translation initiation factor 4E to inhibit protein translation. A large chromosomal deletion including this gene is associated with increased risk of schizophrenia and epilepsy in human patients. Reduced expression of this gene has been observed in various human cancers and the encoded protein may inhibit tumor invasion. [provided by RefSeq, May 2017]

Immunogen

A synthetic peptide of human CYFIP1

Gene ID

23191

Swiss Prot

Q7L576

Synonyms

SHYC; SRA1; SRA-1; P140SRA-1

Reactivity

Human,Mouse,Rat

Application

WB, ICC/IF, FC

Recommended dilution

WB: 1:1000

ICC/IF: 1:50

FC: 1:20-1:50

Calculated MW

145 kDa

Observed MW

145 kDa

Host species

Rabbit

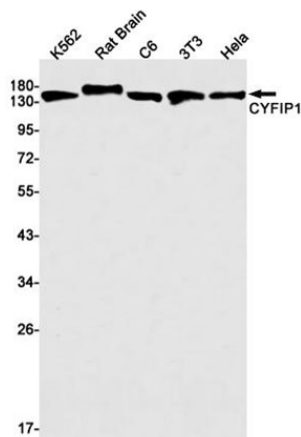
Clonality

Monoclonal

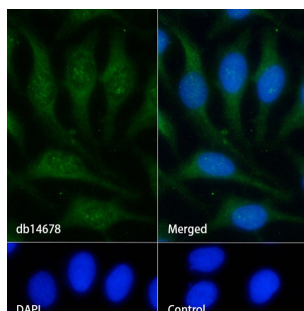
Clonality No.

DGR13325

Isotype	IgG
Purity	Affinity Purification
Conjugation	Un-conjugated
Storage Stability	Store at -20°C. Supplied in 50mM Tris-Glycine(pH 7.4), 0.15M NaCl, 40% Glycerol, 0.01% sodium azide and 0.05% BSA. Stable for 12 months from date of receipt.



Western blot detection of CYFIP1 in K562, Rat Brain, C6, 3T3, HeLa cell lysates using CYFIP1 antibody (1:1000 diluted).



Immunofluorescence analysis of HeLa cells labelling CYFIP1 with db14678.

The cells were fixed with cold 100% methanol (10min, 4°C) and blocked in 1% BSA/10% normal goat serum/0.3M glycine in 0.1% PBS-Tween 20 for 1h. The cells were then incubate with db14678 (1:50) at room temprature for 1h, followed by a further incubation at room temperature for 45min with Goat Anti Rabbit IgG (H+L)-AF488 (db10005, shown in green). Nuclear DNA was labeled in blue with DAPI.

Control: Secondary antibody only.