

Recombinant

DGRmAb®

ILF3 (DGR13357) Rabbit mAb

db11176

Package : 10µL 20µL 50µL 100µL

Product Name : ILF3 (DGR13357) Rabbit mAb**Cat.No.:** db11176**Synonyms** : CBTF; DRBF; MMP4; MPP4; NF90; NFAR; NF110; NF90a; NF90b; NFAR2; TCP80; DRBP76;
NF110b; NFAR-1; TCP110; MPHOSPH4; NF-AT-90**Application** : WB, IHC-P, ICC/IF, FC**Reactivity** : Human**Host species** : Rabbit**Background**

This gene encodes a double-stranded RNA (dsRNA) binding protein that complexes with other proteins, dsRNAs, small noncoding RNAs, and mRNAs to regulate gene expression and stabilize mRNAs. This protein (NF90, ILF3) forms a heterodimer with a 45 kDa transcription factor (NF45, ILF2) required for T-cell expression of interleukin 2. This complex has been shown to affect the redistribution of nuclear mRNA to the cytoplasm. Knockdown of NF45 or NF90 protein retards cell growth, possibly by inhibition of mRNA stabilization. In contrast, an isoform (NF110) of this gene that is predominantly restricted to the nucleus has only minor effects on cell growth when its levels are reduced. Alternative splicing results in multiple transcript variants encoding distinct isoforms. [provided by RefSeq, Dec 2014]

Immunogen

A synthetic peptide of human ILF3

Gene ID

3609

Swiss Prot

Q12906

SynonymsCBTF; DRBF; MMP4; MPP4; NF90; NFAR; NF110; NF90a; NF90b; NFAR2; TCP80; DRBP76;
NF110b; NFAR-1; TCP110; MPHOSPH4; NF-AT-90**Reactivity**

Human

Application

WB, IHC-P, ICC/IF, FC

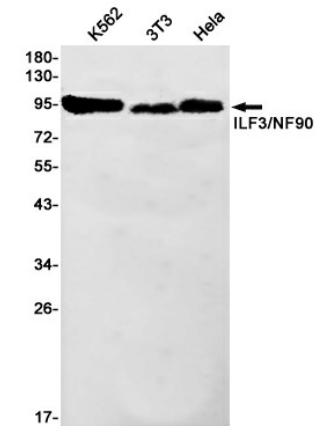
Recommended dilutionWB: 1:1000-1:5000
IHC-P: 1:1000-1:5000
ICC/IF: 1:50-1:200
FC: 1:20-1:50**Calculated MW**

95 kDa

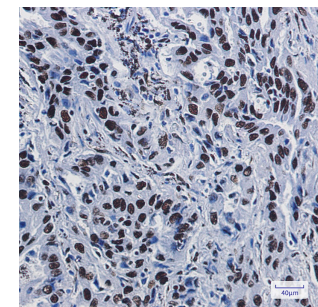
Observed MW

95 kDa

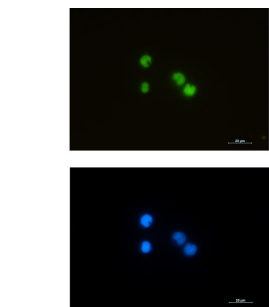
Host species	Rabbit
Clonality	Monoclonal
Clonality No.	DGR13357
Isotype	IgG
Purity	Affinity Purification
Conjugation	Un-conjugated
Storage Stability	Store at -20°C. Supplied in 50mM Tris-Glycine(pH 7.4), 0.15M NaCl, 40% Glycerol, 0.01% sodium azide and 0.05% BSA. Stable for 12 months from date of receipt.



Western blot detection of ILF3/NF90 in K562,3T3,HeLa cell lysates using ILF3/NF90 antibody(1:1000 diluted).



Immunohistochemical analysis of paraffin-embedded human lung cancer tissue using db11176 antibody.



Immunofluorescent analysis of Jurkat cells using db11176 antibody (green), and DAPI (blue).