

Recombinant

DGRmAb®

EWSR1 (DGR13497) Rabbit mAb

db14236

Package : 10µL 20µL 50µL 100µL

Product Name : EWSR1 (DGR13497) Rabbit mAb**Cat.No.:** db14236**Synonyms** : EWS; EWS-FLI1; bK984G1.4**Application** : WB, IHC-P, ICC/IF, FC**Reactivity** : Human,Mouse,Rat**Host species** : Rabbit**Background**

This gene encodes a multifunctional protein that is involved in various cellular processes, including gene expression, cell signaling, and RNA processing and transport. The protein includes an N-terminal transcriptional activation domain and a C-terminal RNA-binding domain. Chromosomal translocations between this gene and various genes encoding transcription factors result in the production of chimeric proteins that are involved in tumorigenesis. These chimeric proteins usually consist of the N-terminal transcriptional activation domain of this protein fused to the C-terminal DNA-binding domain of the transcription factor protein. Mutations in this gene, specifically a t(11;22)(q24;q12) translocation, are known to cause Ewing sarcoma as well as neuroectodermal and various other tumors. Alternative splicing of this gene results in multiple transcript variants. Related pseudogenes have been identified on chromosomes 1 and 14. [provided by RefSeq, Jul 2009]

Immunogen

A synthetic peptide of human EWSR1

Gene ID

2130

Swiss Prot

Q01844

Synonyms

EWS; EWS-FLI1; bK984G1.4

Reactivity

Human,Mouse,Rat

Application

WB, IHC-P, ICC/IF, FC

Recommended dilution

WB: 1:2000-1:20000

IHC-P: 1:200-1:500

ICC/IF: 1:200-1:1000

FC: 1:100

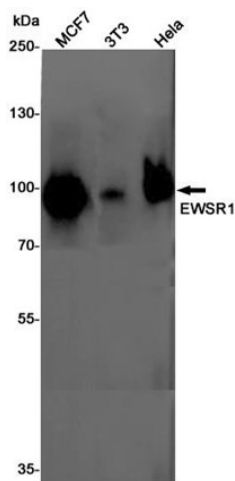
Calculated MW

69 kDa

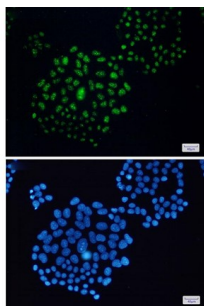
Observed MW

85 kDa

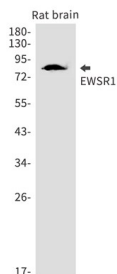
Host species	Rabbit
Clonality	Monoclonal
Clonality No.	DGR13497
Isotype	IgG
Purity	Affinity Purification
Conjugation	Un-conjugated
Storage Stability	Store at -20°C. Supplied in 50mM Tris-Glycine(pH 7.4), 0.15M NaCl, 40% Glycerol, 0.01% sodium azide and 0.05% BSA. Stable for 12 months from date of receipt.



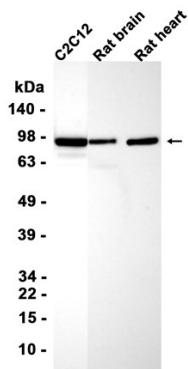
Western blot detection of EWSR1 in MCF7,3T3,HeLa cell lysates using EWSR1 antibody(1:1000 diluted).



Immunofluorescent analysis of HeLa cells using db14236 antibody (green), and DAPI (blue).



Western blot analysis of EWSR1 in rat brain lysates using EWSR1 antibody(1:1000 diluted).



Western blot analysis of extracts from C2C12 cells and Rat kidney, Rat heart tissue using db14236 at 1:6000.

