

Recombinant

DGRmAb®

BAP31 (DGR13532) Rabbit mAb

db14840

Package : 10µL 20µL 50µL 100µL

Product Name : BAP31 (DGR13532) Rabbit mAb**Cat.No.:** db14840**Synonyms** : CDM; DDCH; BAP31; 6C6-AG; DXS1357E**Application** : WB, IHC-P, ICC/IF**Reactivity** : Human,Mouse**Host species** : Rabbit**Background**

This gene encodes a member of the B-cell receptor associated protein 31 superfamily. The encoded protein is a multi-pass transmembrane protein of the endoplasmic reticulum that is involved in the anterograde transport of membrane proteins from the endoplasmic reticulum to the Golgi and in caspase 8-mediated apoptosis. Microdeletions in this gene are associated with contiguous ABCD1/DXS1375E deletion syndrome (CADD5), a neonatal disorder. Alternative splicing of this gene results in multiple transcript variants. Two related pseudogenes have been identified on chromosome 16. [provided by RefSeq, Jan 2012]

Immunogen

A synthetic peptide of human BAP31

Gene ID

10134

Swiss Prot

P51572

Synonyms

CDM; DDCH; BAP31; 6C6-AG; DXS1357E

Reactivity

Human,Mouse

Application

WB, IHC-P, ICC/IF

Recommended dilution

WB: 1:1000-1:5000

IHC-P: 1:200-1:500

ICC/IF: 1:100-1:200

Calculated MW

28 kDa

Observed MW

28 kDa

Host species

Rabbit

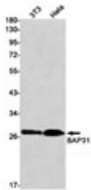
Clonality

Monoclonal

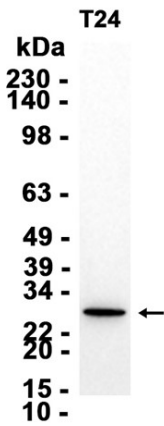
Clonality No.

DGR13532

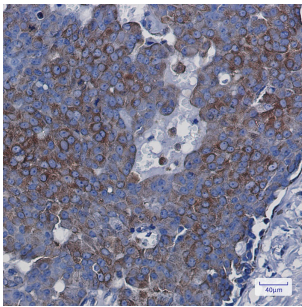
Isotype	IgG
Purity	Affinity Purification
Conjugation	Un-conjugated
Storage Stability	Store at -20°C. Supplied in 50mM Tris-Glycine(pH 7.4), 0.15M NaCl, 40% Glycerol, 0.01% sodium azide and 0.05% BSA. Stable for 12 months from date of receipt.



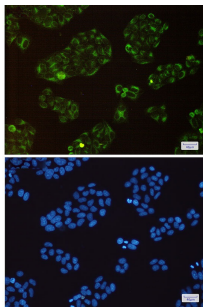
Western blot detection of BAP31 in K562,HeLa cell lysates using BAP31 antibody(1:1000 diluted).



Western blot analysis of extracts from T24 cells using db14840 at 1:3000.



Immunohistochemical analysis of paraffin-embedded human breast cancer using db14840 antibody.



Immunofluorescent analysis of HeLa cells using db14840 antibody (green), and DAPI (blue).