

Recombinant

DGRmAb®

RASGRF1 (DGR13600) Rabbit mAb

db11878

Package : 10µL 20µL 50µL 100µL

Product Name : RASGRF1 (DGR13600) Rabbit mAb**Cat.No.:** db11878**Synonyms :** GNRP; GRF1; CDC25; GRF55; CDC25L; H-GRF55; PP13187; ras-GRF1**Application :** WB**Reactivity :** Human,Rat**Host species :** Rabbit**Background**

The protein encoded by this gene is a guanine nucleotide exchange factor (GEF) similar to the *Saccharomyces cerevisiae* CDC25 gene product. Functional analysis has demonstrated that this protein stimulates the dissociation of GDP from RAS protein. The studies of the similar gene in mouse suggested that the Ras-GEF activity of this protein in brain can be activated by Ca²⁺ influx, muscarinic receptors, and G protein beta-gamma subunit. Mouse studies also indicated that the Ras-GEF signaling pathway mediated by this protein may be important for long-term memory. Alternatively spliced transcript variants encoding distinct isoforms have been reported. [provided by RefSeq, Mar 2009]

Immunogen

A synthetic peptide of human RASGRF1

Gene ID

5923

Swiss Prot

Q13972

Synonyms

GNRP; GRF1; CDC25; GRF55; CDC25L; H-GRF55; PP13187; ras-GRF1

Reactivity

Human,Rat

Application

WB

Recommended dilution

WB: 1:1000-1:5000

Calculated MW

145 kDa

Observed MW

145 kDa

Host species

Rabbit

Clonality

Monoclonal

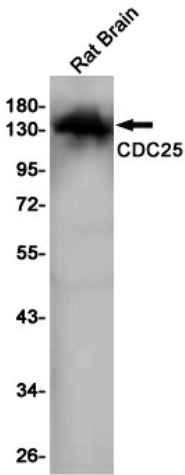
Clonality No.

DGR13600

Isotype

IgG

Purity	Affinity Purification
Conjugation	Un-conjugated
Storage Stability	Store at -20°C. Supplied in 50mM Tris-Glycine(pH 7.4), 0.15M NaCl, 40% Glycerol, 0.01% sodium azide and 0.05% BSA. Stable for 12 months from date of receipt.



Western blot detection of CDC25 in Rat Brain lysates using CDC25 antibody(1:1000 diluted).