

Recombinant

DGRmAb®

RAS (DGR13636) Rabbit mAb

db13171

Package : 10µL 20µL 50µL 100µL

Product Name : RAS (DGR13636) Rabbit mAb**Cat.No.:** db13171**Synonyms** : NS6; CMNS; NCMS; ALPS4; N-ras; NRAS1**Application** : WB, IHC-P, ICC/IF, FC, IP**Reactivity** : Human,Mouse,Rat**Host species** : Rabbit**Background**

This is an N-ras oncogene encoding a membrane protein that shuttles between the Golgi apparatus and the plasma membrane. This shuttling is regulated through palmitoylation and depalmitoylation by the ZDHHC9-GOLGA7 complex. The encoded protein, which has intrinsic GTPase activity, is activated by a guanine nucleotide-exchange factor and inactivated by a GTPase activating protein. Mutations in this gene have been associated with somatic rectal cancer, follicular thyroid cancer, autoimmune lymphoproliferative syndrome, Noonan syndrome, and juvenile myelomonocytic leukemia. [provided by RefSeq, Jun 2011]

Immunogen

A synthetic peptide of human RAS

Gene ID

4893

Swiss Prot

P01111

Synonyms

NS6; CMNS; NCMS; ALPS4; N-ras; NRAS1

Reactivity

Human,Mouse,Rat

Application

WB, IHC-P, ICC/IF, FC, IP

Recommended dilution

WB: 1:1000-1:5000

IHC-P: 1:500-1:2000

ICC/IF: 1:50-1:100

FC: 1:20-1:50

IP: 1:10-1:100

Calculated MW

22 kDa

Observed MW

22 kDa

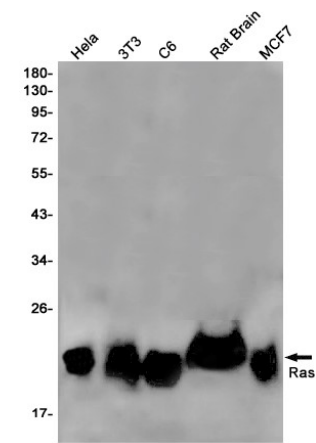
Host species

Rabbit

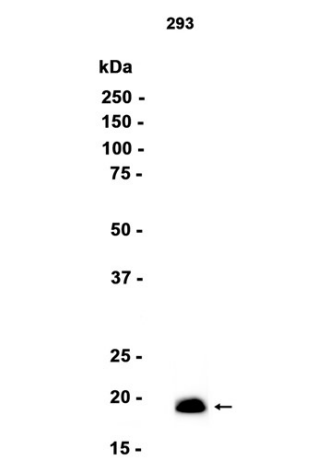
Clonality

Monoclonal

Clonality No.	DGR13636
Isotype	IgG
Purity	Affinity Purification
Conjugation	Un-conjugated
Storage Stability	Store at -20°C. Supplied in 50mM Tris-Glycine(pH 7.4), 0.15M NaCl, 40% Glycerol, 0.01% sodium azide and 0.05% BSA. Stable for 12 months from date of receipt.



Western blot detection of Ras in HeLa,3T3,C6,Rat Brain,MCF7 cell lysates using Ras antibody(1:1000 diluted).



Western blot analysis of extracts from 293 cells using db13174 at 1:1000.