

Recombinant

DGRmAb®

Apg12 (DGR13704) Rabbit mAb

db13302

Package : 10µL 20µL 50µL 100µL

Product Name : Apg12 (DGR13704) Rabbit mAb**Cat.No.:** db13302**Synonyms** : APG12; FBR93; APG12L; HAPG12**Application** : WB, IHC-P**Reactivity** : Human,Mouse,Rat**Host species** : Rabbit**Background**

Autophagy is a process of bulk protein degradation in which cytoplasmic components, including organelles, are enclosed in double-membrane structures called autophagosomes and delivered to lysosomes or vacuoles for degradation. ATG12 is the human homolog of a yeast protein involved in autophagy (Mizushima et al., 1998 [PubMed 9852036]).[supplied by OMIM, Mar 2008]

Immunogen

A synthetic peptide of human Apg12

Gene ID

9140

Swiss Prot

O94817

Synonyms

APG12; FBR93; APG12L; HAPG12

Reactivity

Human,Mouse,Rat

Application

WB, IHC-P

Recommended dilution

WB: 1:1000-1:5000

IHC-P: 1:200-1:500

Calculated MW

15 kDa

Observed MW

55 kDa

Host species

Rabbit

Clonality

Monoclonal

Clonality No.

DGR13704

Isotype

IgG

Purity

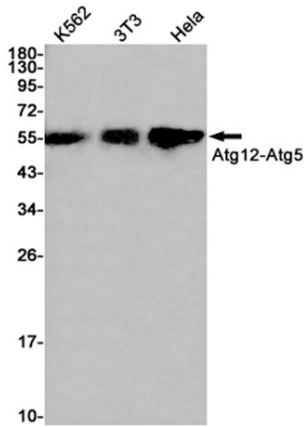
Affinity Purification

Conjugation

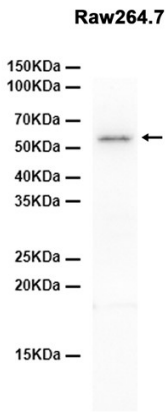
Un-conjugated

Storage Stability

Store at -20°C. Supplied in 50mM Tris-Glycine(pH 7.4), 0.15M NaCl, 40% Glycerol, 0.01% sodium azide and 0.05% BSA. Stable for 12 months from date of receipt.



Western blot detection of Apg12 in K562,3T3,HeLa cell lysates using Apg12 antibody(1:1000 diluted).



Western blot analysis of extracts from Raw264.7 cells using db13302 at 1:3000.