

Recombinant

DGRmAb®

STAT5A/B (DGR13893) Rabbit mAb

db12807

Package : 10µL 20µL 50µL 100µL

Product Name : STAT5A/B (DGR13893) Rabbit mAb**Cat.No.:** db12807**Synonyms :** MGF; STAT5**Application :** WB, IHC-P, ICC/IF, FC, IP**Reactivity :** Human,Mouse,Rat**Host species :** Rabbit**Background**

The protein encoded by this gene is a member of the STAT family of transcription factors. In response to cytokines and growth factors, STAT family members are phosphorylated by the receptor associated kinases, and then form homo- or heterodimers that translocate to the cell nucleus where they act as transcription activators. This protein is activated by, and mediates the responses of many cell ligands, such as IL2, IL3, IL7 GM-CSF, erythropoietin, thrombopoietin, and different growth hormones. Activation of this protein in myeloma and lymphoma associated with a TEL/JAK2 gene fusion is independent of cell stimulus and has been shown to be essential for tumorigenesis. The mouse counterpart of this gene is found to induce the expression of BCL2L1/BCL-X(L), which suggests the antiapoptotic function of this gene in cells. Alternatively spliced transcript variants have been found for this gene. [provided by RefSeq, Dec 2013]

Immunogen

Recombinant protein of human STAT5a

Gene ID

6776

Swiss Prot

P42230

Synonyms

MGF; STAT5

Reactivity

Human,Mouse,Rat

Application

WB, IHC-P, ICC/IF, FC, IP

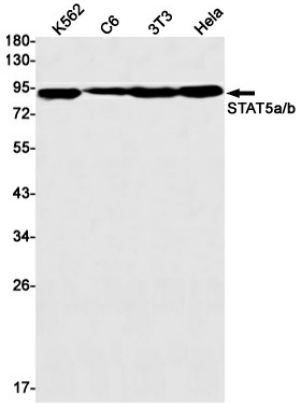
Recommended dilutionWB: 1:1000
IHC-P: 1:200-1:2000
ICC/IF: 1:100-1:200
FC: 1:50-1:100
IP: 1:100**Calculated MW**

90 kDa

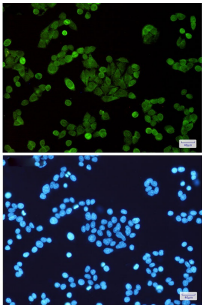
Observed MW

90 kDa

Host species	Rabbit
Clonality	Monoclonal
Clonality No.	DGR13893
Isotype	IgG
Purity	Affinity Purification
Conjugation	Un-conjugated
Storage Stability	Store at -20°C. Supplied in 50mM Tris-Glycine(pH 7.4), 0.15M NaCl, 40% Glycerol, 0.01% sodium azide and 0.05% BSA. Stable for 12 months from date of receipt.



Western blot detection of STAT5a/b in K562,C6,3T3,Hela cell lysates using STAT5a/b antibody(1:1000 diluted).



Immunofluorescent analysis of HeLa cells using db12807 antibody (green), and DAPI (blue).