

Recombinant

DGRmAb®

**MCL1 (DGR13908) Rabbit mAb**

db11616

Package : 10µL 20µL 50µL 100µL

**Product Name** : MCL1 (DGR13908) Rabbit mAb**Cat.No.:** db11616**Synonyms** : TM; EAT; MCL1L; MCL1S; Mcl-1; BCL2L3; MCL1-ES; bcl2-L-3; mcl1/EAT**Application** : WB, IHC-P, ICC/IF, FC**Reactivity** : Human,Mouse,Rat**Host species** : Rabbit**Background**

This gene encodes an anti-apoptotic protein, which is a member of the Bcl-2 family. Alternative splicing results in multiple transcript variants. The longest gene product (isoform 1) enhances cell survival by inhibiting apoptosis while the alternatively spliced shorter gene products (isoform 2 and isoform 3) promote apoptosis and are death-inducing. [provided by RefSeq, Oct 2010]

**Immunogen**

A synthetic peptide of human MCL1

**Gene ID**

4170

**Swiss Prot**

Q07820

**Synonyms**

TM; EAT; MCL1L; MCL1S; Mcl-1; BCL2L3; MCL1-ES; bcl2-L-3; mcl1/EAT

**Reactivity**

Human,Mouse,Rat

**Application**

WB, IHC-P, ICC/IF, FC

**Recommended dilution**

WB: 1:1000-1:5000

IHC-P: 1:100

ICC/IF: 1:100-1:500

FC: 1:100-1:200

**Calculated MW**

37 kDa

**Observed MW**

40 kDa

**Host species**

Rabbit

**Clonality**

Monoclonal

**Clonality No.**

DGR13908

**Isotype**

IgG

**Purity**

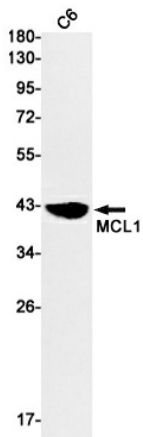
Affinity Purification

Conjugation

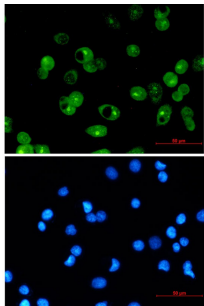
Un-conjugated

Storage Stability

Store at -20°C. Supplied in 50mM Tris-Glycine(pH 7.4), 0.15M NaCl, 40% Glycerol, 0.01% sodium azide and 0.05% BSA. Stable for 12 months from date of receipt.



Western blot detection of MCL1 in C6 cell lysates using MCL1 antibody(1:1000 diluted).



Immunofluorescent analysis of MCF-7 cells using db11616 antibody (green), and DAPI (blue).