

Recombinant

DGRmAb®

Aly (DGR13912) Rabbit mAb

db14838

Package : 10µL 20µL 50µL 100µL

Product Name : Aly (DGR13912) Rabbit mAb

Cat.No.: db14838

Synonyms : ALY; BEF; REF; THOC4; ALY/REF

Application : WB, IHC-P, ICC/IF, FC, IP

Reactivity : Human,Mouse,Rat

Host species : Rabbit

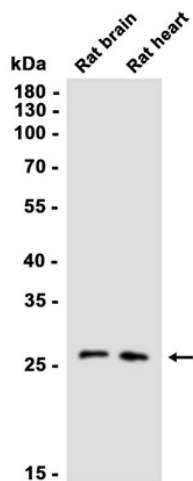
Background	The protein encoded by this gene is a heat stable, nuclear protein and functions as a molecular chaperone. It is thought to regulate dimerization, DNA binding, and transcriptional activity of basic region-leucine zipper (bZIP) proteins. [provided by RefSeq, Jul 2008]
Immunogen	A synthetic peptide of human Aly
Gene ID	10189
Swiss Prot	Q86V81
Synonyms	ALY; BEF; REF; THOC4; ALY/REF
Reactivity	Human,Mouse,Rat
Application	WB, IHC-P, ICC/IF, FC, IP
Recommended dilution	WB: 1:1000 IHC-P: 1:200-1:500 ICC/IF: 1:100-1:200 FC: 1:100 IP: 1:20-1:50
Calculated MW	27 kDa
Observed MW	27 kDa
Host species	Rabbit
Clonality	Monoclonal
Clonality No.	DGR13912
Isotype	IgG
Purity	Affinity Purification

Conjugation

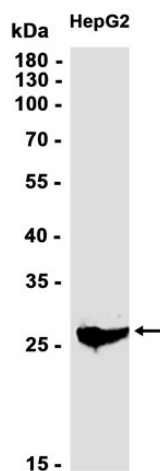
Un-conjugated

Storage Stability

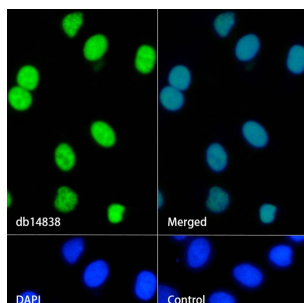
Store at -20°C. Supplied in 50mM Tris-Glycine(pH 7.4), 0.15M NaCl, 40% Glycerol, 0.01% sodium azide and 0.05% BSA. Stable for 12 months from date of receipt.



Western blot analysis of extracts from Rat brain, Rat heart tissues using db14838 at 1:1000.



Western blot analysis of extracts from HepG2 cells using db14838 at 1:1000.



Immunofluorescence analysis of HeLa cells labelling Aly with db14838.

The cells were fixed with 4% PFA (10min, RT) followed by treatment with 0.1% Triton X-100 (10min, RT), and blocked in 1% BSA/10% normal goat serum/0.3M glycine in 0.1% PBS-Tween 20 for 1h. The cells were then incubate with db14838 (1:100) at room temperature for 1h, followed by a further incubation at room temperature for 45min with Goat Anti Rabbit IgG (H+L)-AF488 (db10005, shown in green). Nuclear DNA was labeled in blue with DAPI.

Control: Secondary antibody only.