

Recombinant

DGRmAb®

beta Catenin (DGR13940) Rabbit mAb

db11055

Package : 10µL 20µL 50µL 100µL

Product Name : beta Catenin (DGR13940) Rabbit mAb**Cat.No.:** db11055**Synonyms** : EVR7; CTNNB; MRD19; armadillo**Application** : WB, ICC/IF, FC**Reactivity** : Human,Mouse,Rat**Host species** : Rabbit**Background**

The protein encoded by this gene is part of a complex of proteins that constitute adherens junctions (AJs). AJs are necessary for the creation and maintenance of epithelial cell layers by regulating cell growth and adhesion between cells. The encoded protein also anchors the actin cytoskeleton and may be responsible for transmitting the contact inhibition signal that causes cells to stop dividing once the epithelial sheet is complete. Finally, this protein binds to the product of the APC gene, which is mutated in adenomatous polyposis of the colon. Mutations in this gene are a cause of colorectal cancer (CRC), pilomatixoma (PTR), medulloblastoma (MDB), and ovarian cancer. Alternative splicing results in multiple transcript variants. [provided by RefSeq, Aug 2016]

Immunogen

A synthetic peptide of human beta Catenin

Gene ID

1499

Swiss Prot

P35222

Synonyms

EVR7; CTNNB; MRD19; armadillo

Reactivity

Human,Mouse,Rat

Application

WB, ICC/IF, FC

Recommended dilutionWB: 1:1000
ICC/IF: 1:100-1:200
FC: 1:20**Calculated MW**

86 kDa

Observed MW

86 kDa

Host species

Rabbit

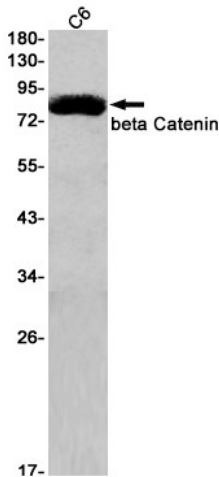
Clonality

Monoclonal

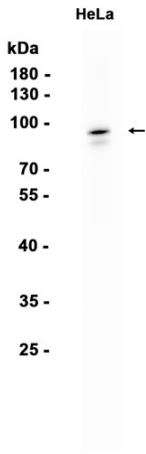
Clonality No.

DGR13940

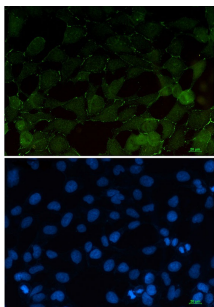
Isotype	IgG
Purity	Affinity Purification
Conjugation	Un-conjugated
Storage Stability	Store at -20°C. Supplied in 50mM Tris-Glycine(pH 7.4), 0.15M NaCl, 40% Glycerol, 0.01% sodium azide and 0.05% BSA. Stable for 12 months from date of receipt.



Western blot detection of beta Catenin in C6 cell lysates using beta Catenin antibody(1:1000 diluted).



Western blot analysis of extracts from HeLa cells using db11055 at 1:1000.



Immunofluorescent analysis of 293T cells using db11055 antibody (green), and DAPI (blue).