

Recombinant

DGRmAb®

## Cytokeratin 10 (DGR13956) Rabbit mAb

db11722

Package : 10µL 20µL 50µL 100µL

**Product Name** : Cytokeratin 10 (DGR13956) Rabbit mAb**Cat.No.:** db11722**Synonyms** : BIE; EHK; K10; KPP; BCIE; CK10**Application** : WB, IHC-P, ICC/IF**Reactivity** : Human,Mouse,Rat**Host species** : Rabbit**Background**

This gene encodes a member of the type I (acidic) cytokeratin family, which belongs to the superfamily of intermediate filament (IF) proteins. Keratins are heteropolymeric structural proteins which form the intermediate filament. These filaments, along with actin microfilaments and microtubules, compose the cytoskeleton of epithelial cells. Mutations in this gene are associated with epidermolytic hyperkeratosis. This gene is located within a cluster of keratin family members on chromosome 17q21. [provided by RefSeq, Jul 2008]

**Immunogen**

A synthetic peptide of human Cytokeratin 10

**Gene ID**

3858

**Swiss Prot**

P13645

**Synonyms**

BIE; EHK; K10; KPP; BCIE; CK10

**Reactivity**

Human,Mouse,Rat

**Application**

WB, IHC-P, ICC/IF

**Recommended dilution**

WB: 1:1000-1:5000

IHC-P: 1:500-1:5000

ICC/IF: 1:100

**Calculated MW**

59 kDa

**Observed MW**

59 kDa

**Host species**

Rabbit

**Clonality**

Monoclonal

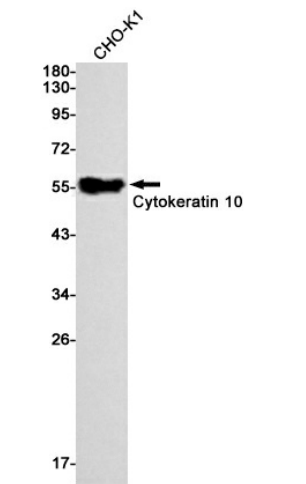
**Clonality No.**

DGR13956

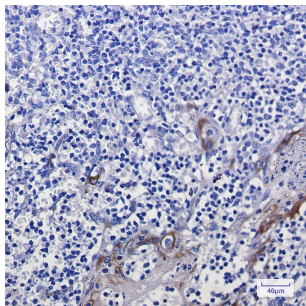
**Isotype**

IgG

Purity	Affinity Purification
Conjugation	Un-conjugated
Storage Stability	Store at -20°C. Supplied in 50mM Tris-Glycine(pH 7.4), 0.15M NaCl, 40% Glycerol, 0.01% sodium azide and 0.05% BSA. Stable for 12 months from date of receipt.



Western blot detection of Cytokeratin 10 in CHO-K1 cell lysates using Cytokeratin 10 antibody(1:1000 diluted).



Immunohistochemical analysis of paraffin-embedded human tonsil using db11722 antibody.