

Recombinant

DGRmAb®

CREB (DGR14017) Rabbit mAb

db13965

Package : 10µL 20µL 50µL 100µL

Product Name : CREB (DGR14017) Rabbit mAb**Cat.No.:** db13965**Synonyms** : CREB; CREB-1**Application** : WB, IHC-P**Reactivity** : Human,Mouse,Rat**Host species** : Rabbit**Background**

This gene encodes a transcription factor that is a member of the leucine zipper family of DNA binding proteins. This protein binds as a homodimer to the cAMP-responsive element, an octameric palindrome. The protein is phosphorylated by several protein kinases, and induces transcription of genes in response to hormonal stimulation of the cAMP pathway. Alternate splicing of this gene results in several transcript variants encoding different isoforms. [provided by RefSeq, Mar 2016]

Immunogen

A synthetic peptide of human CREB

Gene ID

1385

Swiss Prot

P16220

Synonyms

CREB; CREB-1

Reactivity

Human,Mouse,Rat

Application

WB, IHC-P

Recommended dilutionWB: 1:1000
IHC-P: 1:200-1:500**Calculated MW**

37 kDa

Observed MW

43 kDa

Host species

Rabbit

Clonality

Monoclonal

Clonality No.

DGR14017

Isotype

IgG

Purity

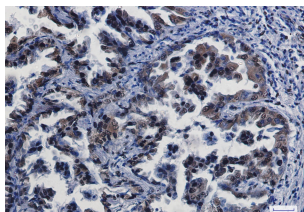
Affinity Purification

Conjugation

Un-conjugated

Storage Stability

Store at -20°C. Supplied in 50mM Tris-Glycine(pH 7.4), 0.15M NaCl, 40% Glycerol, 0.01% sodium azide and 0.05% BSA. Stable for 12 months from date of receipt.



Immunohistochemical analysis of paraffin-embedded human lung cancer using db13965 antibody.