

Recombinant

DGRmAb®

Claudin 3 (DGR14058) Rabbit mAb

db13582

Package : 10µL 20µL 50µL 100µL

Product Name : Claudin 3 (DGR14058) Rabbit mAb

Cat.No.: db13582

Synonyms : RVP1; HRVP1; C7orf1; CPE-R2; CPETR2

Application : WB, IHC-P, ICC/IF, FC, IP

Reactivity : Human

Host species : Rabbit

Background

Tight junctions represent one mode of cell-to-cell adhesion in epithelial or endothelial cell sheets, forming continuous seals around cells and serving as a physical barrier to prevent solutes and water from passing freely through the paracellular space. These junctions are comprised of sets of continuous networking strands in the outwardly facing cytoplasmic leaflet, with complementary grooves in the inwardly facing extracytoplasmic leaflet. The protein encoded by this intronless gene, a member of the claudin family, is an integral membrane protein and a component of tight junction strands. It is also a low-affinity receptor for *Clostridium perfringens* enterotoxin, and shares aa sequence similarity with a putative apoptosis-related protein found in rat. [provided by RefSeq, Jul 2008]

Immunogen

A synthetic peptide of human Claudin 3

Gene ID

1365

Swiss Prot

O15551

Synonyms

RVP1; HRVP1; C7orf1; CPE-R2; CPETR2

Reactivity

Human

Application

WB, IHC-P, ICC/IF, FC, IP

Recommended dilution

WB: 1:1000
IHC-P: 1:100-1:200
ICC/IF: 1:100
FC: 1:20-1:50
IP: 1:20-1:50

Calculated MW

23 kDa

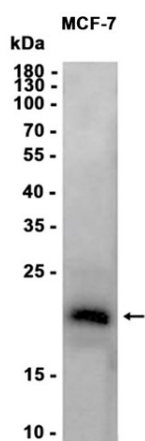
Observed MW

20 kDa

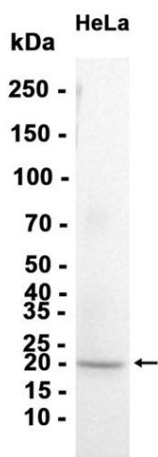
Host species

Rabbit

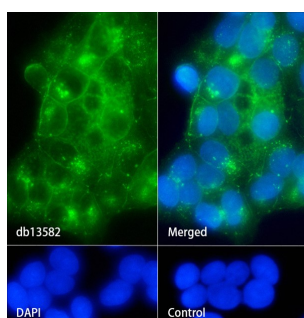
Clonality	Monoclonal
Clonality No.	DGR14058
Isotype	IgG
Purity	Affinity Purification
Conjugation	Un-conjugated
Storage Stability	Store at -20°C. Supplied in 50mM Tris-Glycine(pH 7.4), 0.15M NaCl, 40% Glycerol, 0.01% sodium azide and 0.05% BSA. Stable for 12 months from date of receipt.



Western blot analysis of extracts from MCF-7 cells using db13582 at 1:1000.



Western blot analysis of extracts from HeLa cells using db13582 at 1:1000.



Immunofluorescence analysis of MCF-7 cells labelling Claudin 3 with db13582.

The cells were fixed with cold 100% methanol (10min, 4°C) and blocked in 1% BSA/10% normal goat serum/0.3M glycine in 0.1% PBS-Tween 20 for 1h. The cells were then incubate with db13582 (1:100) at room temprature for 1h, followed by a further incubation at room temprature for 45min with Goat Anti Rabbit IgG (H+L)-AF488 (db10005, shown in green). Nuclear DNA was labeled in blue with DAPI.

Control: Secondary antibody only.