

Recombinant

DGRmAb®

## EpCAM (DGR14159) Rabbit mAb

db14338

Package : 10µL 20µL 50µL 100µL

**Product Name** : EpCAM (DGR14159) Rabbit mAb

**Cat.No.:** db14338

**Synonyms** : ESA; KSA; M4S1; MK-1; DIAR5; EGP-2; EGP40; KS1/4; MIC18; TROP1; EGP314; HNPCC8; TACSTD1

**Application** : WB, IHC-P, ICC/IF, IP

**Reactivity** : Human,Mouse,Rat

**Host species** : Rabbit

### Background

This gene encodes a carcinoma-associated antigen and is a member of a family that includes at least two type I membrane proteins. This antigen is expressed on most normal epithelial cells and gastrointestinal carcinomas and functions as a homotypic calcium-independent cell adhesion molecule. The antigen is being used as a target for immunotherapy treatment of human carcinomas. Mutations in this gene result in congenital tufting enteropathy. [provided by RefSeq, Dec 2008]

### Immunogen

Recombinant protein of human EpCAM

### Gene ID

4072

### Swiss Prot

P16422

### Synonyms

ESA; KSA; M4S1; MK-1; DIAR5; EGP-2; EGP40; KS1/4; MIC18; TROP1; EGP314; HNPCC8; TACSTD1

### Reactivity

Human,Mouse,Rat

### Application

WB, IHC-P, ICC/IF, IP

### Recommended dilution

WB: 1:1000  
 IHC-P: 1:1000-1:10000  
 ICC/IF: 1:100  
 IP: 1:20-1:50

### Calculated MW

35 kDa

### Observed MW

40 kDa

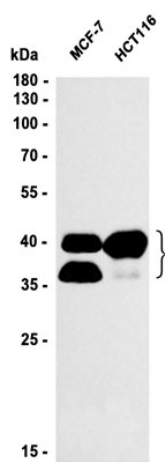
### Host species

Rabbit

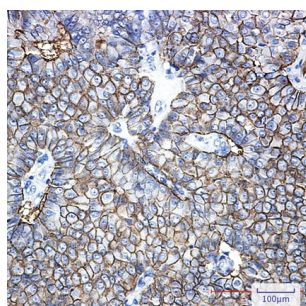
### Clonality

Monoclonal

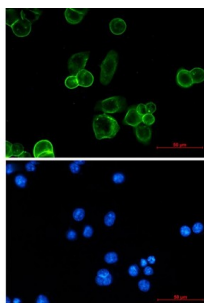
<b>Clonality No.</b>	DGR14159
<b>Isotype</b>	IgG
<b>Purity</b>	Affinity Purification
<b>Conjugation</b>	Un-conjugated
<b>Storage Stability</b>	Store at -20°C. Supplied in 50mM Tris-Glycine(pH 7.4), 0.15M NaCl, 40% Glycerol, 0.01% sodium azide and 0.05% BSA. Stable for 12 months from date of receipt.



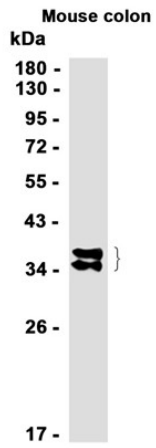
Western blot analysis of extracts from MCF-7, HCT116 cells using db14338 at 1:1000.



Immunohistochemical analysis of paraffin-embedded human breast cancer using db14338 antibody.



Immunofluorescent analysis of MCF-7 cells using db14338 antibody (green), and DAPI (blue).



Western blot analysis of extracts from Mouse colon tissue using db14338 at 1:1000.