

Recombinant

DGRmAb®

**Vinculin (DGR14193) Rabbit mAb**

db11158

Package : 10µL 20µL 50µL 100µL

**Product Name** : Vinculin (DGR14193) Rabbit mAb**Cat.No.:** db11158**Synonyms** : MV; MVCL; CMD1W; CMH15; HEL114**Application** : WB, IHC-P**Reactivity** : Human,Mouse,Rat**Host species** : Rabbit**Background**

Vinculin is a cytoskeletal protein associated with cell-cell and cell-matrix junctions, where it is thought to function as one of several interacting proteins involved in anchoring F-actin to the membrane. Defects in VCL are the cause of cardiomyopathy dilated type 1W. Dilated cardiomyopathy is a disorder characterized by ventricular dilation and impaired systolic function, resulting in congestive heart failure and arrhythmia. Multiple alternatively spliced transcript variants have been found for this gene, but the biological validity of some variants has not been determined. [provided by RefSeq, Jul 2008]

**Immunogen**

Recombinant protein of human Vinculin

**Gene ID**

7414

**Swiss Prot**

P18206

**Synonyms**

MV; MVCL; CMD1W; CMH15; HEL114

**Reactivity**

Human,Mouse,Rat

**Application**

WB, IHC-P

**Recommended dilution**WB: 1:1000  
IHC-P: 1:200-1:2000**Calculated MW**

124 kDa

**Observed MW**

124 kDa

**Host species**

Rabbit

**Clonality**

Monoclonal

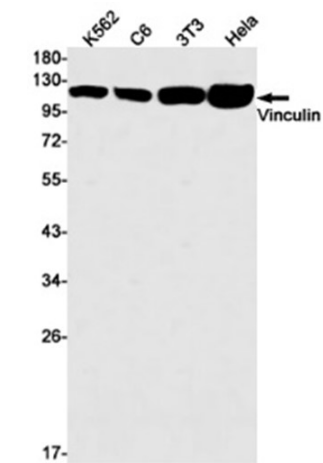
**Clonality No.**

DGR14193

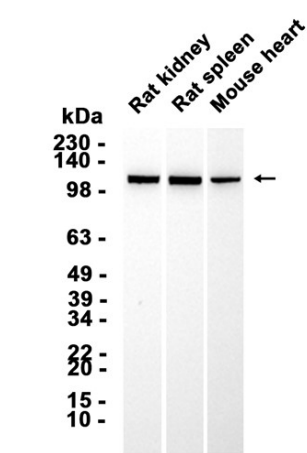
**Isotype**

IgG

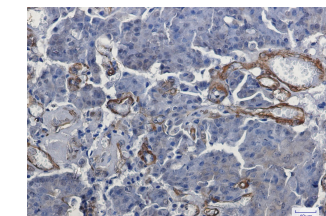
Purity	Affinity Purification
Conjugation	Un-conjugated
Storage Stability	Store at -20°C. Supplied in 50mM Tris-Glycine(pH 7.4), 0.15M NaCl, 40% Glycerol, 0.01% sodium azide and 0.05% BSA. Stable for 12 months from date of receipt.



Western blot detection of Vinculin in K562,C6,3T3,Hela cell lysates using Vinculin antibody(1:1000 diluted).



Western blot analysis of extracts from Rat kidney, Rat spleen, Mouse heart tissue using db11158 at 1:1000.



Immunohistochemical analysis of paraffin-embedded human breast cancer using db11158 antibody.