

Recombinant

DGRmAb®

Pumilio 1 (DGR14224) Rabbit mAb

db13306

Package : 10µL 20µL 50µL 100µL

Product Name : Pumilio 1 (DGR14224) Rabbit mAb**Cat.No.:** db13306**Synonyms** : PUMH; HSPUM; PUMH1; PUML1**Application** : WB, IHC-P, ICC/IF, FC**Reactivity** : Human,Mouse,Rat**Host species** : Rabbit**Background**

This gene encodes a member of the PUF family, evolutionarily conserved RNA-binding proteins related to the Pumilio proteins of *Drosophila* and the fem-3 mRNA binding factor proteins of *C. elegans*. The encoded protein contains a sequence-specific RNA binding domain comprised of eight repeats and N- and C-terminal flanking regions, and serves as a translational regulator of specific mRNAs by binding to their 3' untranslated regions. The evolutionarily conserved function of the encoded protein in invertebrates and lower vertebrates suggests that the human protein may be involved in translational regulation of embryogenesis, and cell development and differentiation. Alternatively spliced transcript variants encoding different isoforms have been described. [provided by RefSeq, Jul 2008]

Immunogen

A synthetic peptide of human Pumilio 1

Gene ID

9698

Swiss Prot

Q14671

Synonyms

PUMH; HSPUM; PUMH1; PUML1

Reactivity

Human,Mouse,Rat

Application

WB, IHC-P, ICC/IF, FC

Recommended dilution

WB: 1:1000-1:5000

IHC-P: 1:100

ICC/IF: 1:200-1:500

FC: 1:20-1:50

Calculated MW

127 kDa

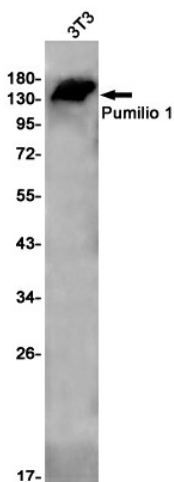
Observed MW

140 kDa

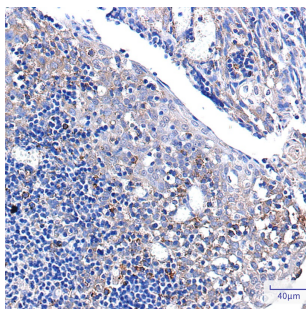
Host species

Rabbit

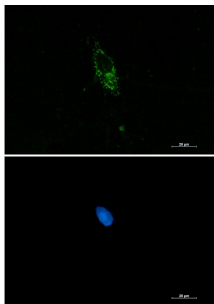
Clonality	Monoclonal
Clonality No.	DGR14224
Isotype	IgG
Purity	Affinity Purification
Conjugation	Un-conjugated
Storage Stability	Store at -20°C. Supplied in 50mM Tris-Glycine(pH 7.4), 0.15M NaCl, 40% Glycerol, 0.01% sodium azide and 0.05% BSA. Stable for 12 months from date of receipt.



Western blot detection of Pumilio 1 in 3T3 cell lysates using Pumilio 1 antibody(1:1000 diluted).



Immunohistochemical analysis of paraffin-embedded human tonsil using db13306 antibody.



Immunofluorescent analysis of HCT116 cells using db13306 antibody (green), and DAPI (blue).