

Recombinant

DGRmAb®

## Neurofilament heavy polypeptide (DGR14226) Rabbit mAb

db12729

Package : 10µL 20µL 50µL 100µL

**Product Name** : Neurofilament heavy polypeptide (DGR14226) Rabbit mAb**Cat.No.:** db12729**Synonyms** : NFH; CMT2CC**Application** : WB, IHC-P, ICC/IF**Reactivity** : Human,Mouse,Rat**Host species** : Rabbit**Background**

Neurofilaments are type IV intermediate filament heteropolymers composed of light, medium, and heavy chains. Neurofilaments comprise the axoskeleton and functionally maintain neuronal caliber. They may also play a role in intracellular transport to axons and dendrites. This gene encodes the heavy neurofilament protein. This protein is commonly used as a biomarker of neuronal damage and susceptibility to amyotrophic lateral sclerosis (ALS) has been associated with mutations in this gene. [provided by RefSeq, Oct 2008]

**Immunogen**

Recombinant protein of human Neurofilament heavy polypeptide

**Gene ID**

4744

**Swiss Prot**

P12036

**Synonyms**

NFH; CMT2CC

**Reactivity**

Human,Mouse,Rat

**Application**

WB, IHC-P, ICC/IF

**Recommended dilution**WB: 1:1000  
IHC-P: 1:200-1:1000  
ICC/IF: 1:100**Calculated MW**

113 kDa

**Observed MW**

180-220 kDa

**Host species**

Rabbit

**Clonality**

Monoclonal

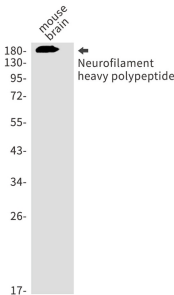
**Clonality No.**

DGR14226

**Isotype**

IgG

Purity	Affinity Purification
Conjugation	Un-conjugated
Storage Stability	Store at -20°C. Supplied in 50mM Tris-Glycine(pH 7.4), 0.15M NaCl, 40% Glycerol, 0.01% sodium azide and 0.05% BSA. Stable for 12 months from date of receipt.



Western blot detection of Neurofilament heavy polypeptide in mouse brain using Neurofilament heavy polypeptide antibody.