

Recombinant

DGRmAb®

PLK1 (DGR14228) Rabbit mAb

db11470

Package : 10µL 20µL 50µL 100µL

Product Name : PLK1 (DGR14228) Rabbit mAb**Cat.No.:** db11470**Synonyms** : PLK; STPK13**Application** : WB, ICC/IF, FC, IP**Reactivity** : Human**Host species** : Rabbit**Background**

The Ser/Thr protein kinase encoded by this gene belongs to the CDC5/Polo subfamily. It is highly expressed during mitosis and elevated levels are found in many different types of cancer. Depletion of this protein in cancer cells dramatically inhibited cell proliferation and induced apoptosis; hence, it is a target for cancer therapy. [provided by RefSeq, Sep 2015]

Immunogen

A synthetic peptide of human PLK1

Gene ID

5347

Swiss Prot

P53350

Synonyms

PLK; STPK13

Reactivity

Human

Application

WB, ICC/IF, FC, IP

Recommended dilution

WB: 1:1000

ICC/IF: 1:200-1:500

FC: 1:50-1:100

IP: 1:20-1:50

Calculated MW

68 kDa

Observed MW

68 kDa

Host species

Rabbit

Clonality

Monoclonal

Clonality No.

DGR14228

Isotype

IgG

Purity

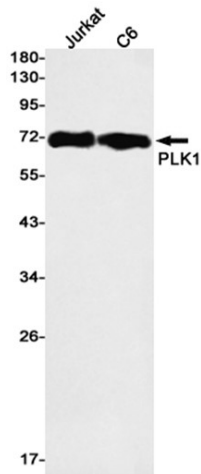
Affinity Purification

Conjugation

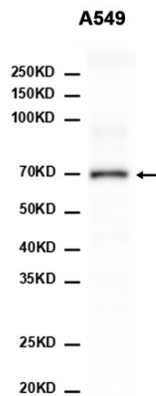
Un-conjugated

Storage Stability

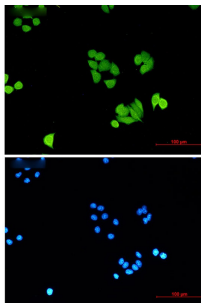
Store at -20°C. Supplied in 50mM Tris-Glycine(pH 7.4), 0.15M NaCl, 40% Glycerol, 0.01% sodium azide and 0.05% BSA. Stable for 12 months from date of receipt.



Western blot detection of PLK1 in Jurkat,C6 cell lysates using PLK1 antibody(1:1000 diluted).



Western blot analysis of extracts from A549 cells using db11470 at 1:1000.



Immunofluorescent analysis of HeLa cells using db11470 antibody (green), and DAPI (blue).