

Recombinant

DGRmAb®

Hsp27 (DGR14279) Rabbit mAb

db13418

Package : 10µL 20µL 50µL 100µL

Product Name : Hsp27 (DGR14279) Rabbit mAb**Cat.No.:** db13418**Synonyms** : CMT2F; HMN2B; HSP27; HSP28; Hsp25; SRP27; HS.76067; HEL-S-102**Application** : WB, IHC-P**Reactivity** : Human**Host species** : Rabbit**Background**

This gene encodes a member of the small heat shock protein (HSP20) family of proteins. In response to environmental stress, the encoded protein translocates from the cytoplasm to the nucleus and functions as a molecular chaperone that promotes the correct folding of other proteins. This protein plays an important role in the differentiation of a wide variety of cell types. Expression of this gene is correlated with poor clinical outcome in multiple human cancers, and the encoded protein may promote cancer cell proliferation and metastasis, while protecting cancer cells from apoptosis. Mutations in this gene have been identified in human patients with Charcot-Marie-Tooth disease and distal hereditary motor neuropathy. [provided by RefSeq, Aug 2017]

Immunogen

A synthetic peptide of human Hsp27

Gene ID

3315

Swiss Prot

P04792

Synonyms

CMT2F; HMN2B; HSP27; HSP28; Hsp25; SRP27; HS.76067; HEL-S-102

Reactivity

Human

Application

WB, IHC-P

Recommended dilutionWB: 1:1000
IHC-P: 1:100-1:200**Calculated MW**

23 kDa

Observed MW

27 kDa

Host species

Rabbit

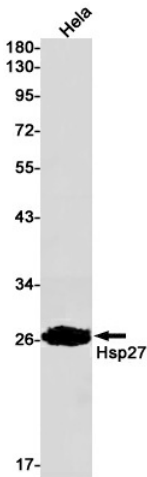
Clonality

Monoclonal

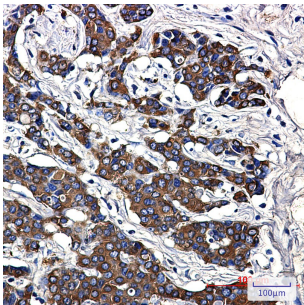
Clonality No.

DGR14279

Isotype	IgG
Purity	Affinity Purification
Conjugation	Un-conjugated
Storage Stability	Store at -20°C. Supplied in 50mM Tris-Glycine(pH 7.4), 0.15M NaCl, 40% Glycerol, 0.01% sodium azide and 0.05% BSA. Stable for 12 months from date of receipt.



Western blot detection of Hsp27 in HeLa cell lysates using Hsp27 antibody(1:1000 diluted).



Immunohistochemical analysis of paraffin-embedded human breast cancer using db13418 antibody.