

Recombinant

DGRmAb®

Casein Kinase 1 alpha (DGR14301) Rabbit mAb

db11359

Package : 10µL 20µL 50µL 100µL

Product Name : Casein Kinase 1 alpha (DGR14301) Rabbit mAb**Cat.No.:** db11359**Synonyms** : CK1; CK1a; CKIa; HLCDGP1; PRO2975; HEL-S-77p**Application** : WB, IP**Reactivity** : Human,Mouse,Rat**Host species** : Rabbit**Background**

Casein kinases are operationally defined by their preferential utilization of acidic proteins such as caseins as substrates. It can phosphorylate a large number of proteins. Participates in Wnt signaling. Phosphorylates CTNNB1 at 'Ser-45'. May phosphorylate PER1 and PER2. May play a role in segregating chromosomes during mitosis (PubMed:11955436, PubMed:1409656, PubMed:18305108). May play a role in keratin cytoskeleton disassembly and thereby, it may regulate epithelial cell migration (PubMed:23902688).

Immunogen

A synthetic peptide of human Casein Kinase 1 alpha

Gene ID

1452

Swiss Prot

P48729

Synonyms

CK1; CK1a; CKIa; HLCDGP1; PRO2975; HEL-S-77p

Reactivity

Human,Mouse,Rat

Application

WB, IP

Recommended dilution

WB: 1:1000
IP: 1:20-1:50

Calculated MW

39 kDa

Observed MW

34 kDa

Host species

Rabbit

Clonality

Monoclonal

Clonality No.

DGR14301

Isotype

IgG

Purity

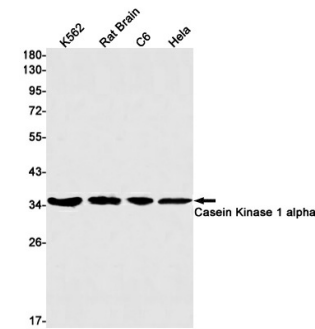
Affinity Purification

Conjugation

Un-conjugated

Storage Stability

Store at -20°C. Supplied in 50mM Tris-Glycine(pH 7.4), 0.15M NaCl, 40% Glycerol, 0.01% sodium azide and 0.05% BSA. Stable for 12 months from date of receipt.



Western blot detection of Casein Kinase 1 alpha in K562,Rat Brain,C6,Hela cell lysates using Casein Kinase 1 alpha antibody(1:1000 diluted).