

Recombinant

DGRmAb®

Prostaglandin E Synthase (DGR14315) Rabbit mAb

db14205

Package : 10µL 20µL 50µL 100µL

Product Name : Prostaglandin E Synthase (DGR14315) Rabbit mAb**Cat.No.:** db14205**Synonyms :** PGES; MPGES; PIG12; PP102; PP1294; MGST-IV; MGST1L1; TP53I12; mPGES-1; MGST1-L1**Application :** WB**Reactivity :** Human,Mouse,Rat**Host species :** Rabbit**Background**

The protein encoded by this gene is a glutathione-dependent prostaglandin E synthase. The expression of this gene has been shown to be induced by proinflammatory cytokine interleukin 1 beta (IL1B). Its expression can also be induced by tumor suppressor protein TP53, and may be involved in TP53 induced apoptosis. Knockout studies in mice suggest that this gene may contribute to the pathogenesis of collagen-induced arthritis and mediate acute pain during inflammatory responses. [provided by RefSeq, Jul 2008]

Immunogen

A synthetic peptide of human Prostaglandin E Synthase

Gene ID

9536

Swiss Prot

O14684

Synonyms

PGES; MPGES; PIG12; PP102; PP1294; MGST-IV; MGST1L1; TP53I12; mPGES-1; MGST1-L1

Reactivity

Human,Mouse,Rat

Application

WB

Recommended dilution

WB: 1:1000

Calculated MW

17 kDa

Observed MW

17 kDa

Host species

Rabbit

Clonality

Monoclonal

Clonality No.

DGR14315

Isotype

IgG

Purity

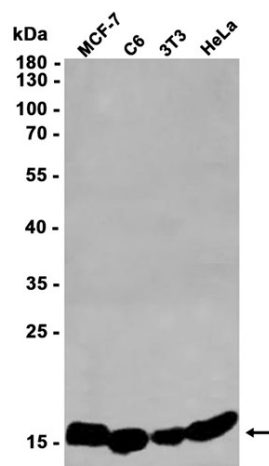
Affinity Purification

Conjugation

Un-conjugated

Storage Stability

Store at -20°C. Supplied in 50mM Tris-Glycine(pH 7.4), 0.15M NaCl, 40% Glycerol, 0.01% sodium azide and 0.05% BSA. Stable for 12 months from date of receipt.



Western blot analysis of extracts from MCF7, C6, 3T3, HeLa cells using db14205 at 1:1000.