

Recombinant

DGRmAb®

Cyclin A2 (DGR14328) Rabbit mAb

db12205

Package : 10µL 20µL 50µL 100µL

Product Name : Cyclin A2 (DGR14328) Rabbit mAb

Cat.No.: db12205

Synonyms : CCN1; CCNA

Application : WB, IHC-P, ICC/IF, IP

Reactivity : Human,Mouse

Host species : Rabbit

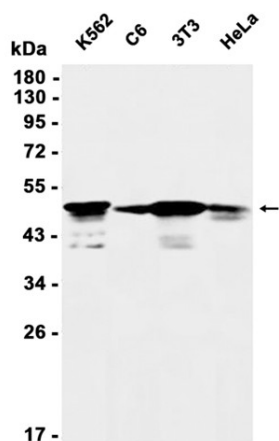
Background	The protein encoded by this gene belongs to the highly conserved cyclin family, whose members function as regulators of the cell cycle. This protein binds and activates cyclin-dependent kinase 2 and thus promotes transition through G1/S and G2/M. [provided by RefSeq, Aug 2016]
Immunogen	A synthetic peptide of human Cyclin A2
Gene ID	890
Swiss Prot	P20248
Synonyms	CCN1; CCNA
Reactivity	Human,Mouse
Application	WB, IHC-P, ICC/IF, IP
Recommended dilution	WB: 1:1000-1:5000 IHC-P: 1:200-1:500 ICC/IF: 1:100-1:200 IP: 1:50
Calculated MW	49 kDa
Observed MW	49 kDa
Host species	Rabbit
Clonality	Monoclonal
Clonality No.	DGR14328
Isotype	IgG
Purity	Affinity Purification

Conjugation

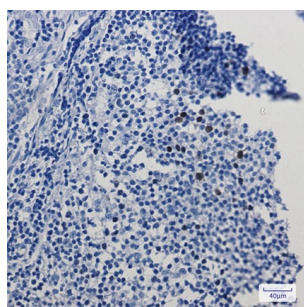
Un-conjugated

Storage Stability

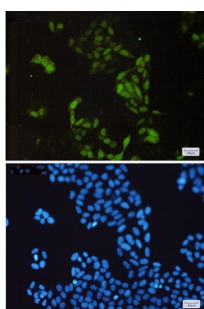
Store at -20°C. Supplied in 50mM Tris-Glycine(pH 7.4), 0.15M NaCl, 40% Glycerol, 0.01% sodium azide and 0.05% BSA. Stable for 12 months from date of receipt.



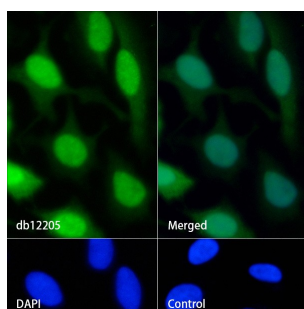
Western blot analysis of extracts from K562, C6, 3T3, HeLa cells using db12205 at 1:1000.



Immunohistochemical analysis of paraffin-embedded human tonsil using db12205 antibody.



Immunofluorescent analysis of HeLa cells using db12205 antibody (green), and DAPI (blue).



Immunofluorescence analysis of HeLa cells labelling Cyclin A2 with db12205.

The cells were fixed with cold 100% methanol (10min, 4°C) and blocked in 1% BSA/10% normal goat serum/0.3M glycine in 0.1% PBS-Tween 20 for 1h. The cells were then incubate with db12205 (1:100) at room temprature for 1h, followed by a further incubation at room temperature for 45min with Goat Anti Rabbit IgG (H+L)-AF488 (db10005, shown in green). Nuclear DNA was labeled in blue with DAPI.

Control: Secondary antibody only.

