

Recombinant

DGRmAb®

CYP1B1 (DGR14349) Rabbit mAb

db14044

Package : 10µL 20µL 50µL 100µL

Product Name : CYP1B1 (DGR14349) Rabbit mAb**Cat.No.:** db14044**Synonyms** : CP1B; ASGD6; GLC3A; CYP1B1; P4501B1**Application** : WB, IHC-P**Reactivity** : Human,Mouse,Rat**Host species** : Rabbit**Background**

This gene encodes a member of the cytochrome P450 superfamily of enzymes. The cytochrome P450 proteins are monooxygenases which catalyze many reactions involved in drug metabolism and synthesis of cholesterol, steroids and other lipids. The enzyme encoded by this gene localizes to the endoplasmic reticulum and metabolizes procarcinogens such as polycyclic aromatic hydrocarbons and 17beta-estradiol. Mutations in this gene have been associated with primary congenital glaucoma; therefore it is thought that the enzyme also metabolizes a signaling molecule involved in eye development, possibly a steroid. [provided by RefSeq, Jul 2008]

Immunogen

Recombinant protein of human CYP1B1

Gene ID

1545

Swiss Prot

Q16678

Synonyms

CP1B; ASGD6; GLC3A; CYP1B1; P4501B1

Reactivity

Human,Mouse,Rat

Application

WB, IHC-P

Recommended dilution

WB: 1:1000-1:5000

IHC-P: 1:200-1:500

Calculated MW

61 kDa

Observed MW

61 kDa

Host species

Rabbit

Clonality

Monoclonal

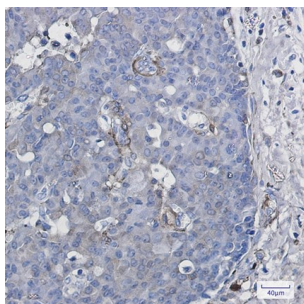
Clonality No.

DGR14349

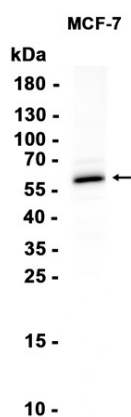
Isotype

IgG

Purity	Affinity Purification
Conjugation	Un-conjugated
Storage Stability	Store at -20°C. Supplied in 50mM Tris-Glycine(pH 7.4), 0.15M NaCl, 40% Glycerol, 0.01% sodium azide and 0.05% BSA. Stable for 12 months from date of receipt.



Immunohistochemical analysis of paraffin-embedded human breast cancer using db14044 antibody.



Western blot analysis of extracts from MCF-7 cells using db14044 at 1:1000.