

Recombinant

DGRmAb®

MAT1A (DGR14353) Rabbit mAb

db13368

Package : 10µL 20µL 50µL 100µL

Product Name : MAT1A (DGR14353) Rabbit mAb**Cat.No.:** db13368**Synonyms** : MAT; SAMS; MATA1; SAMS1**Application** : WB, IP**Reactivity** : Human,Mouse,Rat**Host species** : Rabbit**Background**

This gene catalyzes a two-step reaction that involves the transfer of the adenosyl moiety of ATP to methionine to form S-adenosylmethionine and triphosphosphate, which is subsequently cleaved to PPi and Pi. S-adenosylmethionine is the source of methyl groups for most biological methylations. The encoded protein is found as a homotetramer (MAT I) or a homodimer (MAT III) whereas a third form, MAT II (gamma), is encoded by the MAT2A gene. Mutations in this gene are associated with methionine adenosyltransferase deficiency. [provided by RefSeq, Jul 2008]

Immunogen

A synthetic peptide of human MAT1A

Gene ID

4143

Swiss Prot

Q00266

Synonyms

MAT; SAMS; MATA1; SAMS1

Reactivity

Human,Mouse,Rat

Application

WB, IP

Recommended dilution

WB: 1:1000-1:5000

IP: 1:10-1:100

Calculated MW

44 kDa

Observed MW

44 kDa

Host species

Rabbit

Clonality

Monoclonal

Clonality No.

DGR14353

Isotype

IgG

Purity

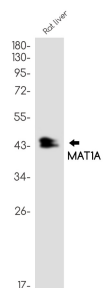
Affinity Purification

Conjugation

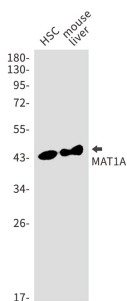
Un-conjugated

Storage Stability

Store at -20°C. Supplied in 50mM Tris-Glycine(pH 7.4), 0.15M NaCl, 40% Glycerol, 0.01% sodium azide and 0.05% BSA. Stable for 12 months from date of receipt.



Western blot analysis of MAT1A in rat liver lysates using MAT1A antibody.



Western blot detection of MAT1A in HSC, mouse liver using MAT1A antibody.