

Recombinant

DGRmAb®

CDK1 (DGR14384) Rabbit mAb

db12527

Package : 10µL 20µL 50µL 100µL

Product Name : CDK1 (DGR14384) Rabbit mAb**Cat.No.:** db12527**Synonyms :** CDC2; CDC28A; P34CDC2**Application :** WB, IHC-P, ICC/IF, FC, IP**Reactivity :** Human**Host species :** Rabbit**Background**

The protein encoded by this gene is a member of the Ser/Thr protein kinase family. This protein is a catalytic subunit of the highly conserved protein kinase complex known as M-phase promoting factor (MPF), which is essential for G1/S and G2/M phase transitions of eukaryotic cell cycle. Mitotic cyclins stably associate with this protein and function as regulatory subunits. The kinase activity of this protein is controlled by cyclin accumulation and destruction through the cell cycle. The phosphorylation and dephosphorylation of this protein also play important regulatory roles in cell cycle control. Alternatively spliced transcript variants encoding different isoforms have been found for this gene. [provided by RefSeq, Mar 2009]

Immunogen

A synthetic peptide of human CDK1

Gene ID

983

Swiss Prot

P06493

Synonyms

CDC2; CDC28A; P34CDC2

Reactivity

Human

Application

WB, IHC-P, ICC/IF, FC, IP

Recommended dilution

WB: 1:2000-1:20000

IHC-P: 1:200-1:500

ICC/IF: 1:100-1:200

FC: 1:100

IP: 1:10-1:100

Calculated MW

34 kDa

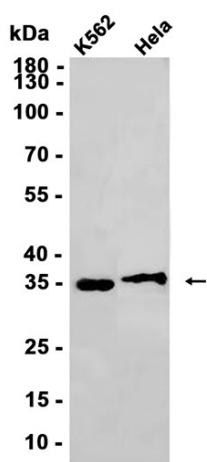
Observed MW

34 kDa

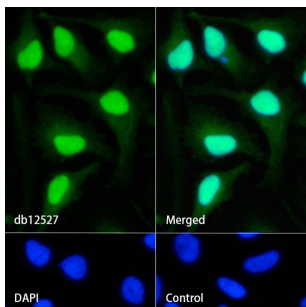
Host species

Rabbit

Clonality	Monoclonal
Clonality No.	DGR14384
Isotype	IgG
Purity	Affinity Purification
Conjugation	Un-conjugated
Storage Stability	Store at -20°C. Supplied in 50mM Tris-Glycine(pH 7.4), 0.15M NaCl, 40% Glycerol, 0.01% sodium azide and 0.05% BSA. Stable for 12 months from date of receipt.



Western blot analysis of extracts from K562, HeLa cells using db12527 at 1:1000.



Immunofluorescence analysis of HeLa cells labelling CDK1 with db12527.

The cells were fixed with 4% PFA (10min, RT) followed by treatment with 0.1% Triton X-100 (10min, RT), and blocked in 1% BSA/10% normal goat serum/0.3M glycine in 0.1% PBS-Tween 20 for 1h. The cells were then incubate with db12527 (1:100) at room temprature for 1h, followed by a further incubation at room temperature for 45min with Goat Anti Rabbit IgG (H+L)-AF488 (db10005, shown in green). Nuclear DNA was labeled in blue with DAPI.

Control: Secondary antibody only.