

Recombinant

DGRmAb®

Hsp60 (DGR14394) Rabbit mAb

db11062

Package : 10µL 20µL 50µL 100µL

Product Name : Hsp60 (DGR14394) Rabbit mAb**Cat.No.:** db11062**Synonyms :** HLD4; CPN60; GROEL; HSP60; HSP65; SPG13; HSP-60; HuCHA60**Application :** WB, IHC-P**Reactivity :** Human,Mouse,Rat**Host species :** Rabbit**Background**

This gene encodes a member of the chaperonin family. The encoded mitochondrial protein may function as a signaling molecule in the innate immune system. This protein is essential for the folding and assembly of newly imported proteins in the mitochondria. This gene is adjacent to a related family member and the region between the 2 genes functions as a bidirectional promoter. Several pseudogenes have been associated with this gene. Two transcript variants encoding the same protein have been identified for this gene. Mutations associated with this gene cause autosomal recessive spastic paraplegia 13. [provided by RefSeq, Jun 2010]

Immunogen

A synthetic peptide of human Hsp60

Gene ID

3329

Swiss Prot

P10809

Synonyms

HLD4; CPN60; GROEL; HSP60; HSP65; SPG13; HSP-60; HuCHA60

Reactivity

Human,Mouse,Rat

Application

WB, IHC-P

Recommended dilution

WB: 1:1000-1:5000

IHC-P: 1:100-1:200

Calculated MW

61 kDa

Observed MW

60 kDa

Host species

Rabbit

Clonality

Monoclonal

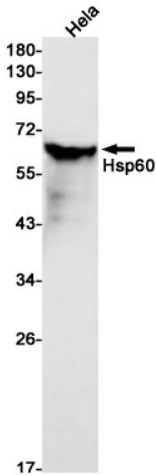
Clonality No.

DGR14394

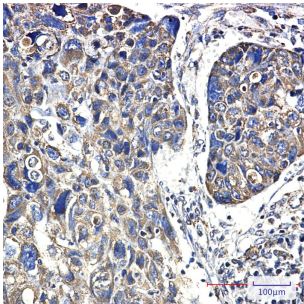
Isotype

IgG

Purity	Affinity Purification
Conjugation	Un-conjugated
Storage Stability	Store at -20°C. Supplied in 50mM Tris-Glycine(pH 7.4), 0.15M NaCl, 40% Glycerol, 0.01% sodium azide and 0.05% BSA. Stable for 12 months from date of receipt.



Western blot detection of Hsp60 in HeLa cell lysates using Hsp60 antibody(1:1000 diluted).



Immunohistochemical analysis of paraffin-embedded human lung cancer using db11062 antibody.