

Recombinant

DGRmAb®

14-3-3 (DGR14425) Rabbit mAb

db11678

Package : 10µL 20µL 50µL 100µL

Product Name : 14-3-3 (DGR14425) Rabbit mAb**Cat.No.:** db11678**Synonyms** : HS1; GW128; YWHAA; KCIP-1; HEL-S-1**Application** : WB**Reactivity** : Human,Mouse,Rat**Host species** : Rabbit**Background**

This gene encodes a protein belonging to the 14-3-3 family of proteins, members of which mediate signal transduction by binding to phosphoserine-containing proteins. This highly conserved protein family is found in both plants and mammals. The encoded protein has been shown to interact with RAF1 and CDC25 phosphatases, suggesting that it may play a role in linking mitogenic signaling and the cell cycle machinery. Two transcript variants, which encode the same protein, have been identified for this gene. [provided by RefSeq, Jul 2008]

Immunogen

A synthetic peptide of human '14-3-3

Gene ID

7529

Swiss Prot

P31946

Synonyms

HS1; GW128; YWHAA; KCIP-1; HEL-S-1

Reactivity

Human,Mouse,Rat

Application

WB

Recommended dilution

WB: 1:1000-1:5000

Calculated MW

28 kDa

Observed MW

27-29 kDa

Host species

Rabbit

Clonality

Monoclonal

Clonality No.

DGR14425

Isotype

IgG

Purity

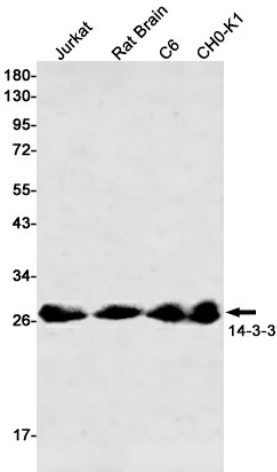
Affinity Purification

Conjugation

Un-conjugated

Storage Stability

Store at -20°C. Supplied in 50mM Tris-Glycine(pH 7.4), 0.15M NaCl, 40% Glycerol, 0.01% sodium azide and 0.05% BSA. Stable for 12 months from date of receipt.



Western blot detection of 41701 in Jurkat,Rat Brain,C6,CHO-K1 cell lysates using 14-3-3 antibody(1:500 diluted).