

Recombinant

DGRmAb®

Ataxin 1 (DGR14428) Rabbit mAb

db12665

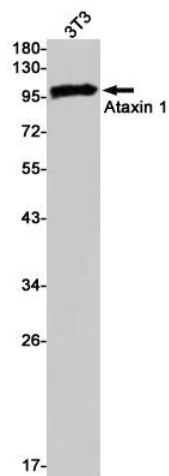
Package : 10µL 20µL 50µL 100µL

Product Name : Ataxin 1 (DGR14428) Rabbit mAb**Cat.No.:** db12665**Synonyms** : ATX1; SCA1; D6S504E**Application** : WB, IP**Reactivity** : Human**Host species** : Rabbit**Background**

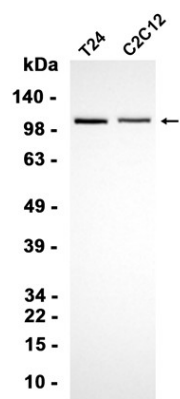
The autosomal dominant cerebellar ataxias (ADCA) are a heterogeneous group of neurodegenerative disorders characterized by progressive degeneration of the cerebellum, brain stem and spinal cord. Clinically, ADCA has been divided into three groups: ADCA types I-III. ADCAI is genetically heterogeneous, with five genetic loci, designated spinocerebellar ataxia (SCA) 1, 2, 3, 4 and 6, being assigned to five different chromosomes. ADCAII, which always presents with retinal degeneration (SCA7), and ADCAIII often referred to as the 'pure' cerebellar syndrome (SCA5), are most likely homogeneous disorders. Several SCA genes have been cloned and shown to contain CAG repeats in their coding regions. ADCA is caused by the expansion of the CAG repeats, producing an elongated polyglutamine tract in the corresponding protein. The expanded repeats are variable in size and unstable, usually increasing in size when transmitted to successive generations. The function of the ataxins is not known. This locus has been mapped to chromosome 6, and it has been determined that the diseased allele contains 40-83 CAG repeats, compared to 6-39 in the normal allele, and is associated with spinocerebellar ataxia type 1 (SCA1). At least two transcript variants encoding the same protein have been found for this gene. [provided by RefSeq, Jul 2016]

Immunogen Recombinant protein of human Ataxin 1**Gene ID** 6310**Swiss Prot** P54253**Synonyms** ATX1; SCA1; D6S504E**Reactivity** Human**Application** WB, IP**Recommended dilution** WB: 1:1000-1:5000
IP: 1:20-1:50**Calculated MW** 87 kDa

Observed MW	105 kDa
Host species	Rabbit
Clonality	Monoclonal
Clonality No.	DGR14428
Isotype	IgG
Purity	Affinity Purification
Conjugation	Un-conjugated
Storage Stability	Store at -20°C. Supplied in 50mM Tris-Glycine(pH 7.4), 0.15M NaCl, 40% Glycerol, 0.01% sodium azide and 0.05% BSA. Stable for 12 months from date of receipt.



Western blot detection of Ataxin 1 in 3T3 cell lysates using Ataxin 1 antibody(1:1000 diluted).



Western blot analysis of extracts from T24, C2C12 cells using db12665 at 1:1000.