

Recombinant

DGRmAb®

## Alpha-synuclein (DGR14457) Rabbit mAb

db14600

Package : 10µL 20µL 50µL 100µL

**Product Name** : Alpha-synuclein (DGR14457) Rabbit mAb**Cat.No.:** db14600**Synonyms** : PD1; NACP; PARK1; PARK4**Application** : WB, IHC-P, IP**Reactivity** : Human,Mouse,Rat**Host species** : Rabbit**Background**

Alpha-synuclein is a member of the synuclein family, which also includes beta- and gamma-synuclein. Synucleins are abundantly expressed in the brain and alpha- and beta-synuclein inhibit phospholipase D2 selectively. SNCA may serve to integrate presynaptic signaling and membrane trafficking. Defects in SNCA have been implicated in the pathogenesis of Parkinson disease. SNCA peptides are a major component of amyloid plaques in the brains of patients with Alzheimer's disease. Alternatively spliced transcripts encoding different isoforms have been identified for this gene. [provided by RefSeq, Feb 2016]

**Immunogen**

Recombinant protein of human Alpha-synuclein

**Gene ID**

6622

**Swiss Prot**

P37840

**Synonyms**

PD1; NACP; PARK1; PARK4

**Reactivity**

Human,Mouse,Rat

**Application**

WB, IHC-P, IP

**Recommended dilution**WB: 1:1000  
IHC-P: 1:1000-1:10000  
IP: 1:20-1:50**Calculated MW**

15 kDa

**Observed MW**

18 kDa

**Host species**

Rabbit

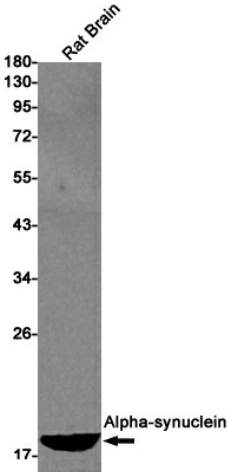
**Clonality**

Monoclonal

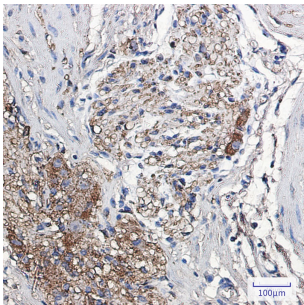
**Clonality No.**

DGR14457

Isotype	IgG
Purity	Affinity Purification
Conjugation	Un-conjugated
Storage Stability	Store at -20°C. Supplied in 50mM Tris-Glycine(pH 7.4), 0.15M NaCl, 40% Glycerol, 0.01% sodium azide and 0.05% BSA. Stable for 12 months from date of receipt.



Western blot detection of Alpha-synuclein in Rat Brain lysates using Alpha-synuclein antibody(1:1000 diluted).



Immunohistochemical analysis of paraffin-embedded human colon cancer using db14600 antibody.