

Recombinant

DGRmAb®

## SMARCC1 (DGR14464) Rabbit mAb

db14615

Package : 10µL 20µL 50µL 100µL

**Product Name :** SMARCC1 (DGR14464) Rabbit mAb**Cat.No.:** db14615**Synonyms :** Rsc8; SRG3; SWI3; BAF155; CRACC1**Application :** WB, ICC/IF, FC, IP**Reactivity :** Human,Rat**Host species :** Rabbit**Background**

The protein encoded by this gene is a member of the SWI/SNF family of proteins, whose members display helicase and ATPase activities and which are thought to regulate transcription of certain genes by altering the chromatin structure around those genes. The encoded protein is part of the large ATP-dependent chromatin remodeling complex SNF/SWI and contains a predicted leucine zipper motif typical of many transcription factors. [provided by RefSeq, Jul 2008]

**Immunogen**

A synthetic peptide of human SMARCC1

**Gene ID**

6599

**Swiss Prot**

Q92922

**Synonyms**

Rsc8; SRG3; SWI3; BAF155; CRACC1

**Reactivity**

Human,Rat

**Application**

WB, ICC/IF, FC, IP

**Recommended dilution**

WB: 1:1000-1:5000

ICC/IF: 1:100

FC: 1:10-1:100

IP: 1:10-1:100

**Calculated MW**

123 kDa

**Observed MW**

155 kDa

**Host species**

Rabbit

**Clonality**

Monoclonal

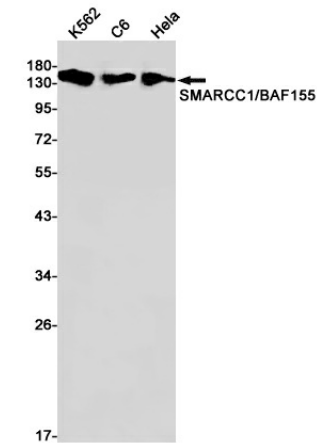
**Clonality No.**

DGR14464

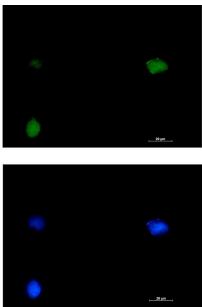
**Isotype**

IgG

Purity	Affinity Purification
Conjugation	Un-conjugated
Storage Stability	Store at -20°C. Supplied in 50mM Tris-Glycine(pH 7.4), 0.15M NaCl, 40% Glycerol, 0.01% sodium azide and 0.05% BSA. Stable for 12 months from date of receipt.



Western blot detection of SMARCC1/BAF155 in K562,C6,HeLa cell lysates using SMARCC1/BAF155 antibody(1:1000 diluted).



Immunofluorescent analysis of HT-1080 cells using db14615 antibody (green), and DAPI (blue).