

Recombinant

DGRmAb®

## TIMM44 (DGR14482) Rabbit mAb

db12323

Package : 10µL 20µL 50µL 100µL

**Product Name** : TIMM44 (DGR14482) Rabbit mAb**Cat.No.:** db12323**Synonyms** : TIM44**Application** : WB, ICC/IF, FC, IP**Reactivity** : Human,Rat**Host species** : Rabbit**Background**

This gene encodes a peripheral membrane protein associated with the mitochondrial inner membrane translocase, which functions in the import of proteins across the mitochondrial inner membrane and into the mitochondrial matrix. The encoded protein mediates binding of mitochondrial heat shock protein 70 to the translocase of inner mitochondrial membrane 23 (TIM23) complex. Expression of this gene is upregulated in kidney in a mouse model of diabetes. A mutation in this gene is associated with familial oncocyctic thyroid carcinoma. [provided by RefSeq, Jul 2016]

**Immunogen**

Recombinant protein of human TIMM44

**Gene ID**

10469

**Swiss Prot**

O43615

**Synonyms**

TIM44

**Reactivity**

Human,Rat

**Application**

WB, ICC/IF, FC, IP

**Recommended dilution**

WB: 1:1000

ICC/IF: 1:200-1:500

FC: 1:200-1:500

IP: 1:100

**Calculated MW**

51 kDa

**Observed MW**

45 kDa

**Host species**

Rabbit

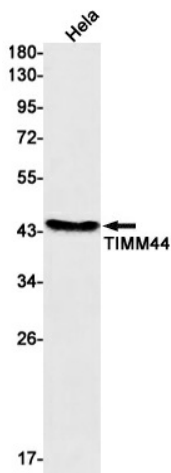
**Clonality**

Monoclonal

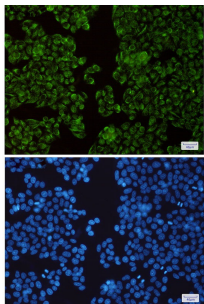
**Clonality No.**

DGR14482

Isotype	IgG
Purity	Affinity Purification
Conjugation	Un-conjugated
Storage Stability	Store at -20°C. Supplied in 50mM Tris-Glycine(pH 7.4), 0.15M NaCl, 40% Glycerol, 0.01% sodium azide and 0.05% BSA. Stable for 12 months from date of receipt.



Western blot detection of TIMM44 in HeLa cell lysates using TIMM44 antibody(1:1000 diluted).



Immunofluorescent analysis of HeLa cells using db12323 antibody (green), and DAPI (blue).