

Recombinant

DGRmAb®

GCLC (DGR14543) Rabbit mAb

db14341

Package : 10µL 20µL 50µL 100µL

Product Name : GCLC (DGR14543) Rabbit mAb**Cat.No.:** db14341**Synonyms :** GCL; GCS; GLCL; GLCLC**Application :** WB, ICC/IF, FC, IP**Reactivity :** Human,Mouse,Rat**Host species :** Rabbit**Background**

Glutamate-cysteine ligase, also known as gamma-glutamylcysteine synthetase is the first rate-limiting enzyme of glutathione synthesis. The enzyme consists of two subunits, a heavy catalytic subunit and a light regulatory subunit. This locus encodes the catalytic subunit, while the regulatory subunit is derived from a different gene located on chromosome 1p22-p21. Mutations at this locus have been associated with hemolytic anemia due to deficiency of gamma-glutamylcysteine synthetase and susceptibility to myocardial infarction.[provided by RefSeq, Oct 2010]

Immunogen

Recombinant protein of human GCLC

Gene ID

2729

Swiss Prot

P48506

Synonyms

GCL; GCS; GLCL; GLCLC

Reactivity

Human,Mouse,Rat

Application

WB, ICC/IF, FC, IP

Recommended dilution

WB: 1:1000

ICC/IF: 1:100

FC: 1:50-1:100

IP: 1:20-1:50

Calculated MW

73 kDa

Observed MW

73 kDa

Host species

Rabbit

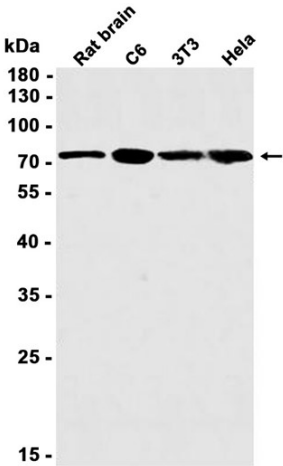
Clonality

Monoclonal

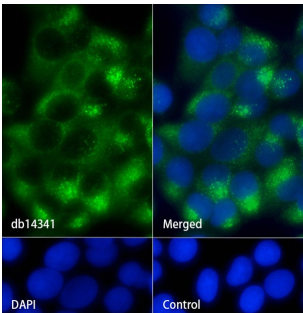
Clonality No.

DGR14543

Isotype	IgG
Purity	Affinity Purification
Conjugation	Un-conjugated
Storage Stability	Store at -20°C. Supplied in 50mM Tris-Glycine(pH 7.4), 0.15M NaCl, 40% Glycerol, 0.01% sodium azide and 0.05% BSA. Stable for 12 months from date of receipt.



Western blot analysis of extracts from C6, 3T3, HeLa cells and Rat brain tissue using db14341 at 1:1000.



Immunofluorescence analysis of MCF-7 cells labelling GCLC with db14341.

The cells were fixed with cold 100% methanol (10min, 4°C) and blocked in 1% BSA/10% normal goat serum/0.3M glycine in 0.1% PBS-Tween 20 for 1h. The cells were then incubate with db14341 (1:100) at room temprature for 1h, followed by a further incubation at room temprature for 45min with Goat Anti Rabbit IgG (H+L)-AF488 (db10005, shown in green). Nuclear DNA was labeled in blue with DAPI.

Control: Secondary antibody only.