

Recombinant

DGRmAb®

HMGCL (DGR14735) Rabbit mAb

db11287

Package : 10µL 20µL 50µL 100µL

Product Name : HMGCL (DGR14735) Rabbit mAb**Cat.No.:** db11287**Synonyms :** HL**Application :** WB, IHC-P**Reactivity :** Human**Host species :** Rabbit**Background**

The protein encoded by this gene belongs to the HMG-CoA lyase family. It is a mitochondrial enzyme that catalyzes the final step of leucine degradation and plays a key role in ketone body formation. Mutations in this gene are associated with HMG-CoA lyase deficiency. Alternatively spliced transcript variants encoding different isoforms have been found for this gene. [provided by RefSeq, Oct 2009]

Immunogen

A synthetic peptide of human HMGCL

Gene ID

3155

Swiss Prot

P35914

Synonyms

HL

Reactivity

Human

Application

WB, IHC-P

Recommended dilution

WB: 1:1000

IHC-P: 1:200-1:500

Calculated MW

34 kDa

Observed MW

34 kDa

Host species

Rabbit

Clonality

Monoclonal

Clonality No.

DGR14735

Isotype

IgG

Purity

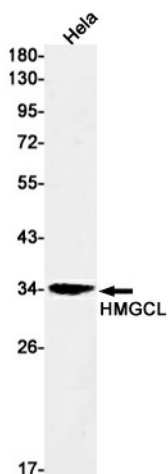
Affinity Purification

Conjugation

Un-conjugated

Storage Stability

Store at -20°C. Supplied in 50mM Tris-Glycine(pH 7.4), 0.15M NaCl, 40% Glycerol, 0.01% sodium azide and 0.05% BSA. Stable for 12 months from date of receipt.



Western blot detection of HMGCL in HeLa cell lysates using HMGCL antibody(1:1000 diluted).