

Recombinant

DGRmAb®

PWP1 (DGR14824) Rabbit mAb

db11325

Package : 10µL 20µL 50µL 100µL

Product Name : PWP1 (DGR14824) Rabbit mAb**Cat.No.:** db11325**Synonyms** : IEF-SSP-9502**Application** : WB, FC**Reactivity** : Human,Mouse,Rat**Host species** : Rabbit**Background**

The protein encoded by this gene contains several WD-40 repeats and is found mostly in the nucleus. The expression and localization of this protein are cell cycle dependent. Expression of this gene is upregulated in pancreatic adenocarcinoma. Three transcript variants encoding different isoforms have been found for this gene. [provided by RefSeq, Dec 2015]

Immunogen

A synthetic peptide of human PWP1

Gene ID

11137

Swiss Prot

Q13610

Synonyms

IEF-SSP-9502

Reactivity

Human,Mouse,Rat

Application

WB, FC

Recommended dilution

WB: 1:1000-1:5000

FC: 1:100-1:200

Calculated MW

56 kDa

Observed MW

75 kDa

Host species

Rabbit

Clonality

Monoclonal

Clonality No.

DGR14824

Isotype

IgG

Purity

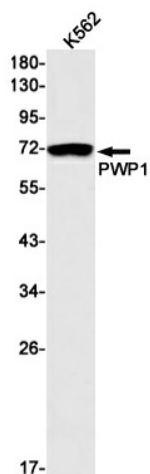
Affinity Purification

Conjugation

Un-conjugated

Storage Stability

Store at -20°C. Supplied in 50mM Tris-Glycine(pH 7.4), 0.15M NaCl, 40% Glycerol, 0.01% sodium azide and 0.05% BSA. Stable for 12 months from date of receipt.



Western blot detection of PWP1 in K562 cell lysates using PWP1 antibody(1:1000 diluted).