

Recombinant

DGRmAb®

PMCA1 (DGR14854) Rabbit mAb

db12009

Package : 10µL 20µL 50µL 100µL

Product Name : PMCA1 (DGR14854) Rabbit mAb**Cat.No.:** db12009**Synonyms :** PMCA1; PMCA1kb**Application :** WB, IHC-P, IP**Reactivity :** Human,Mouse,Rat**Host species :** Rabbit**Background**

The protein encoded by this gene belongs to the family of P-type primary ion transport ATPases characterized by the formation of an aspartyl phosphate intermediate during the reaction cycle. These enzymes remove bivalent calcium ions from eukaryotic cells against very large concentration gradients and play a critical role in intracellular calcium homeostasis. The mammalian plasma membrane calcium ATPase isoforms are encoded by at least four separate genes and the diversity of these enzymes is further increased by alternative splicing of transcripts. The expression of different isoforms and splice variants is regulated in a developmental, tissue- and cell type-specific manner, suggesting that these pumps are functionally adapted to the physiological needs of particular cells and tissues. This gene encodes the plasma membrane calcium ATPase isoform 1. Alternatively spliced transcript variants encoding different isoforms have been identified. [provided by RefSeq, Jul 2008]

Immunogen

A synthetic peptide of human PMCA1

Gene ID

490

Swiss Prot

P20020

Synonyms

PMCA1; PMCA1kb

Reactivity

Human,Mouse,Rat

Application

WB, IHC-P, IP

Recommended dilution

WB: 1:1000-1:5000

IHC-P: 1:200-1:500

IP: 1:20-1:50

Calculated MW

139 kDa

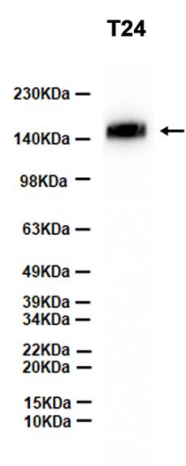
Observed MW

130-250 kDa

Host species

Rabbit

Clonality	Monoclonal
Clonality No.	DGR14854
Isotype	IgG
Purity	Affinity Purification
Conjugation	Un-conjugated
Storage Stability	Store at -20°C. Supplied in 50mM Tris-Glycine(pH 7.4), 0.15M NaCl, 40% Glycerol, 0.01% sodium azide and 0.05% BSA. Stable for 12 months from date of receipt.



Western blot analysis of extracts from T24 cells using db12009 at 1:2000.