

Recombinant

DGRmAb®

ATG16L1 (DGR14867) Rabbit mAb

db13865

Package : 10µL 20µL 50µL 100µL

Product Name : ATG16L1 (DGR14867) Rabbit mAb**Cat.No.:** db13865**Synonyms :** IBD10; WDR30; APG16L; ATG16A; ATG16L**Application :** WB, IHC-P**Reactivity :** Human,Mouse,Rat**Host species :** Rabbit**Background**

The protein encoded by this gene is part of a large protein complex that is necessary for autophagy, the major process by which intracellular components are targeted to lysosomes for degradation. Defects in this gene are a cause of susceptibility to inflammatory bowel disease type 10 (IBD10). Several transcript variants encoding different isoforms have been found for this gene. [provided by RefSeq, Jun 2010]

Immunogen

Recombinant protein of human ATG16L1

Gene ID

55054

Swiss Prot

Q676U5

Synonyms

IBD10; WDR30; APG16L; ATG16A; ATG16L

Reactivity

Human,Mouse,Rat

Application

WB, IHC-P

Recommended dilution

WB: 1:1000-1:5000

IHC-P: 1:50-1:100

Calculated MW

68 kDa

Observed MW

66, 68 kDa

Host species

Rabbit

Clonality

Monoclonal

Clonality No.

DGR14867

Isotype

IgG

Purity

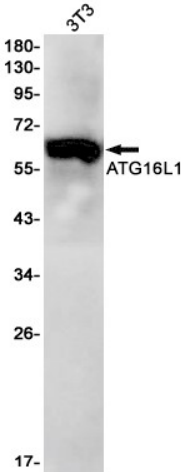
Affinity Purification

Conjugation

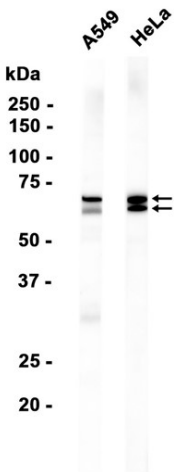
Un-conjugated

Storage Stability

Store at -20°C. Supplied in 50mM Tris-Glycine(pH 7.4), 0.15M NaCl, 40% Glycerol, 0.01% sodium azide and 0.05% BSA. Stable for 12 months from date of receipt.



Western blot detection of ATG16L1 in 3T3 cell lysates using ATG16L1 antibody(1:1000 diluted).



Western blot analysis of extracts from A549, HeLa cells using db13865 at 1:1000.