

Recombinant

DGRmAb®

PUMA (DGR14872) Rabbit mAb

db12341

Package : 10µL 20µL 50µL 100µL

Product Name : PUMA (DGR14872) Rabbit mAb**Cat.No.:** db12341**Synonyms** : JFY1; PUMA; JFY-1**Application** : WB, IHC-P, ICC/IF, FC**Reactivity** : Human**Host species** : Rabbit**Background**

This gene encodes a member of the BCL-2 family of proteins. This family member belongs to the BH3-only pro-apoptotic subclass. The protein cooperates with direct activator proteins to induce mitochondrial outer membrane permeabilization and apoptosis. It can bind to anti-apoptotic Bcl-2 family members to induce mitochondrial dysfunction and caspase activation. Because of its pro-apoptotic role, this gene is a potential drug target for cancer therapy and for tissue injury. Alternative splicing results in multiple transcript variants. [provided by RefSeq, Dec 2011]

Immunogen

A synthetic peptide of human PUMA

Gene ID

27113

Swiss Prot

Q9BXH1

Synonyms

JFY1; PUMA; JFY-1

Reactivity

Human

Application

WB, IHC-P, ICC/IF, FC

Recommended dilution

WB: 1:1000-1:5000

IHC-P: 1:100

ICC/IF: 1:200-1:500

FC: 1:20-1:100

Calculated MW

21 kDa

Observed MW

21 kDa

Host species

Rabbit

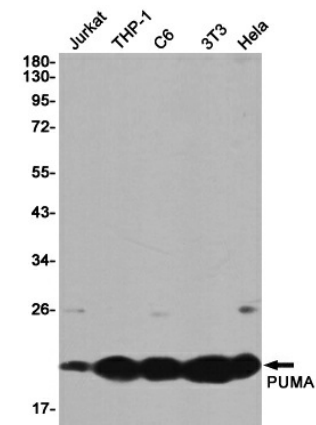
Clonality

Monoclonal

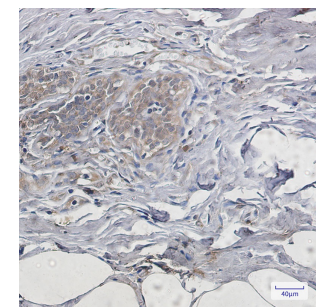
Clonality No.

DGR14872

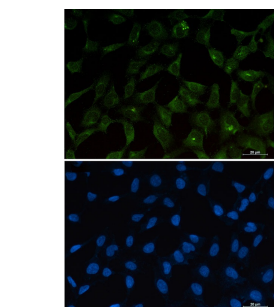
Isotype	IgG
Purity	Affinity Purification
Conjugation	Un-conjugated
Storage Stability	Store at -20°C. Supplied in 50mM Tris-Glycine(pH 7.4), 0.15M NaCl, 40% Glycerol, 0.01% sodium azide and 0.05% BSA. Stable for 12 months from date of receipt.



Western blot detection of PUMA in Jurkat,THP-1,C6,3T3,Hela cell lysates using PUMA antibody(1:1000 diluted).



Immunohistochemical analysis of paraffin-embedded human breast cancer using db12341 antibody.



Immunofluorescent analysis of 293T cells using db12341 antibody (green), and DAPI (blue).