

Recombinant

DGRmAb®

P70 S6 Kinase beta (DGR14930) Rabbit mAb

db14017

Package : 10µL 20µL 50µL 100µL

Product Name : P70 S6 Kinase beta (DGR14930) Rabbit mAb

Cat.No.: db14017

Synonyms : KLS; SRK; S6K2; STK14B; p70S6Kb; P70-beta; S6K-beta2; P70-beta-1; P70-beta-2; p70(S6K)-beta

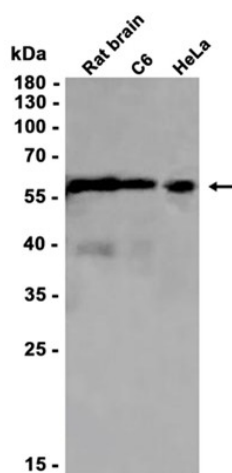
Application : WB, IHC-P, ICC/IF, FC

Reactivity : Human,Mouse,Rat

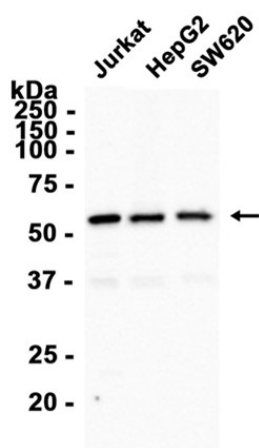
Host species : Rabbit

Background	This gene encodes a member of the RSK (ribosomal S6 kinase) family of serine/threonine kinases. This kinase contains a kinase catalytic domain and phosphorylates the S6 ribosomal protein and eukaryotic translation initiation factor 4B (eIF4B). Phosphorylation of S6 leads to an increase in protein synthesis and cell proliferation. [provided by RefSeq, Jan 2015]
Immunogen	Recombinant protein of human P70 S6 Kinase beta
Gene ID	6199
Swiss Prot	Q9UBS0
Synonyms	KLS; SRK; S6K2; STK14B; p70S6Kb; P70-beta; S6K-beta2; P70-beta-1; P70-beta-2; p70(S6K)-beta
Reactivity	Human,Mouse,Rat
Application	WB, IHC-P, ICC/IF, FC
Recommended dilution	WB: 1:2000-1:20000 IHC-P: 1:50 ICC/IF: 1:100-1:200 FC: 1:100
Calculated MW	54 kDa
Observed MW	54 kDa
Host species	Rabbit
Clonality	Monoclonal
Clonality No.	DGR14930
Isotype	IgG

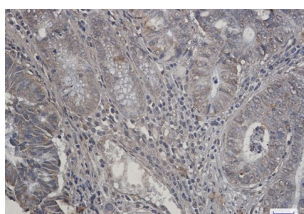
Purity	Affinity Purification
Conjugation	Un-conjugated
Storage Stability	Store at -20°C. Supplied in 50mM Tris-Glycine(pH 7.4), 0.15M NaCl, 40% Glycerol, 0.01% sodium azide and 0.05% BSA. Stable for 12 months from date of receipt.



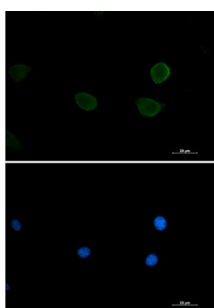
Western blot analysis of extracts from C6, HeLa cells and Rat brain tissue using db14017 at 1:1000.



Western blot analysis of extracts from Jurkat, HepG2, SW620 cells using db14017 at 1:5000.



Immunohistochemical analysis of paraffin-embedded human colon cancer tissue using db14017 antibody.



Immunofluorescent analysis of 3T3 cells using db14017 antibody (green), and DAPI (blue).