

Recombinant

DGRmAb®

## STAT1 alpha (DGR14948) Rabbit mAb

db13473

Package : 10µL 20µL 50µL 100µL

**Product Name :** STAT1 alpha (DGR14948) Rabbit mAb**Cat.No.:** db13473**Synonyms :** CANDF7; IMD31A; IMD31B; IMD31C; ISGF-3; STAT91**Application :** WB, IP**Reactivity :** Human,Mouse**Host species :** Rabbit**Background**

The protein encoded by this gene is a member of the STAT protein family. In response to cytokines and growth factors, STAT family members are phosphorylated by the receptor associated kinases, and then form homo- or heterodimers that translocate to the cell nucleus where they act as transcription activators. This protein can be activated by various ligands including interferon-alpha, interferon-gamma, EGF, PDGF and IL6. This protein mediates the expression of a variety of genes, which is thought to be important for cell viability in response to different cell stimuli and pathogens. Two alternatively spliced transcript variants encoding distinct isoforms have been described. [provided by RefSeq, Jul 2008]

**Immunogen**

A synthetic peptide of human STAT1 alpha

**Gene ID**

6772

**Swiss Prot**

P42224

**Synonyms**

CANDF7; IMD31A; IMD31B; IMD31C; ISGF-3; STAT91

**Reactivity**

Human,Mouse

**Application**

WB, IP

**Recommended dilution**WB: 1:1000  
IP: 1:20-1:50**Calculated MW**

87 kDa

**Observed MW**

87 kDa

**Host species**

Rabbit

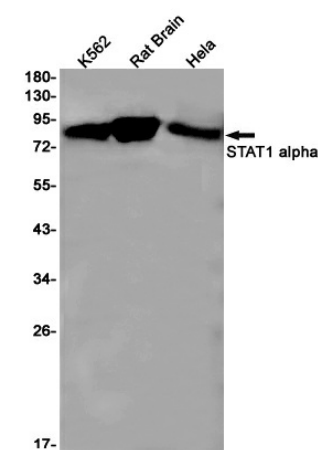
**Clonality**

Monoclonal

**Clonality No.**

DGR14948

Isotype	IgG
Purity	Affinity Purification
Conjugation	Un-conjugated
Storage Stability	Store at -20°C. Supplied in 50mM Tris-Glycine(pH 7.4), 0.15M NaCl, 40% Glycerol, 0.01% sodium azide and 0.05% BSA. Stable for 12 months from date of receipt.



Western blot detection of STAT1 alpha in K562,Rat Brain,HeLa cell lysates using STAT1 alpha antibody(1:1000 diluted).