

Recombinant

DGRmAb®

DKC1 (DGR14998) Rabbit mAb

db14386

Package : 10µL 20µL 50µL 100µL

Product Name : DKC1 (DGR14998) Rabbit mAb**Cat.No.:** db14386**Synonyms** : DKC; CBF5; DKCX; NAP57; NOLA4; XAP101**Application** : WB, IHC-P, ICC/IF**Reactivity** : Human,Mouse,Rat**Host species** : Rabbit**Background**

This gene functions in two distinct complexes. It plays an active role in telomerase stabilization and maintenance, as well as recognition of snoRNAs containing H/ACA sequences which provides stability during biogenesis and assembly into H/ACA small nucleolar RNA ribonucleoproteins (snoRNPs). This gene is highly conserved and widely expressed, and may play additional roles in nucleo-cytoplasmic shuttling, DNA damage response, and cell adhesion. Mutations have been associated with X-linked dyskeratosis congenita. Alternative splicing results in multiple transcript variants. [provided by RefSeq, Jan 2014]

Immunogen

A synthetic peptide of human DKC1

Gene ID

1736

Swiss Prot

O60832

Synonyms

DKC; CBF5; DKCX; NAP57; NOLA4; XAP101

Reactivity

Human,Mouse,Rat

Application

WB, IHC-P, ICC/IF

Recommended dilution

WB: 1:1000-1:5000

IHC-P: 1:50-1:100

ICC/IF: 1:100-1:200

Calculated MW

58 kDa

Observed MW

58 kDa

Host species

Rabbit

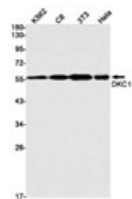
Clonality

Monoclonal

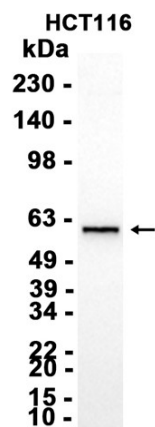
Clonality No.

DGR14998

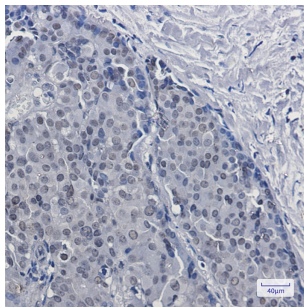
Isotype	IgG
Purity	Affinity Purification
Conjugation	Un-conjugated
Storage Stability	Store at -20°C. Supplied in 50mM Tris-Glycine(pH 7.4), 0.15M NaCl, 40% Glycerol, 0.01% sodium azide and 0.05% BSA. Stable for 12 months from date of receipt.



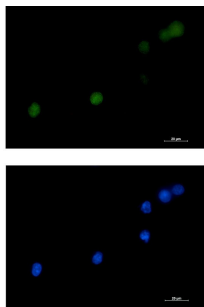
Western blot detection of DKC1 in K562,C6,3T3,HeLa cell lysates using DKC1 antibody(1:1000 diluted).



Western blot analysis of extracts from HCT116 cells using db14386 at 1:3000.



Immunohistochemical analysis of paraffin-embedded human breast cancer tissue using db14386 antibody.



Immunofluorescent analysis of K562 cells using db14386 antibody (green), and DAPI (blue).