

Recombinant

DGRmAb®

Activin Receptor Type IA (DGR15002) Rabbit mAb

db14310

Package : 10µL 20µL 50µL 100µL

Product Name : Activin Receptor Type IA (DGR15002) Rabbit mAb**Cat.No.:** db14310**Synonyms** : FOP; ALK2; SKR1; TSRI; ACTRI; ACVR1A; ACVRLK2**Application** : WB, IP**Reactivity** : Human,Mouse,Rat**Host species** : Rabbit**Background**

Activins are dimeric growth and differentiation factors which belong to the transforming growth factor-beta (TGF-beta) superfamily of structurally related signaling proteins. Activins signal through a heteromeric complex of receptor serine kinases which include at least two type I (I and IB) and two type II (II and IIB) receptors. These receptors are all transmembrane proteins, composed of a ligand-binding extracellular domain with cysteine-rich region, a transmembrane domain, and a cytoplasmic domain with predicted serine/threonine specificity. Type I receptors are essential for signaling; and type II receptors are required for binding ligands and for expression of type I receptors. Type I and II receptors form a stable complex after ligand binding, resulting in phosphorylation of type I receptors by type II receptors. This gene encodes activin A type I receptor which signals a particular transcriptional response in concert with activin type II receptors. Mutations in this gene are associated with fibrodysplasia ossificans progressive. [provided by RefSeq, Jul 2008]

Immunogen

A synthetic peptide of human Activin Receptor Type IA

Gene ID

90

Swiss Prot

Q04771

Synonyms

FOP; ALK2; SKR1; TSRI; ACTRI; ACVR1A; ACVRLK2

Reactivity

Human,Mouse,Rat

Application

WB, IP

Recommended dilution

WB: 1:1000-1:5000

IP: 1:10-1:100

Calculated MW

57 kDa

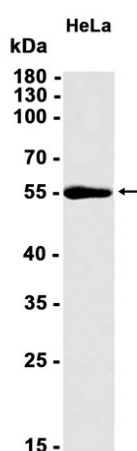
Observed MW

57 kDa

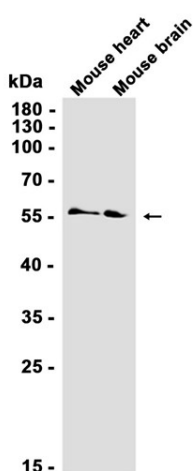
Host species

Rabbit

Clonality	Monoclonal
Clonality No.	DGR15002
Isotype	IgG
Purity	Affinity Purification
Conjugation	Un-conjugated
Storage Stability	Store at -20°C. Supplied in 50mM Tris-Glycine(pH 7.4), 0.15M NaCl, 40% Glycerol, 0.01% sodium azide and 0.05% BSA. Stable for 12 months from date of receipt.



Western blot analysis of extracts from HeLa cells using db14310 at 1:1000.



Western blot analysis of extracts from Mouse heart, Mouse brain tissues using db14310 at 1:1000.