

Recombinant

DGRmAb®

Dlx4 (DGR15006) Rabbit mAb

db12320

Package : 10µL 20µL 50µL 100µL

Product Name : Dlx4 (DGR15006) Rabbit mAb**Cat.No.:** db12320**Synonyms** : BP1; DLX7; DLX8; DLX9; OFC15**Application** : WB, IHC-P, ICC/IF, IP**Reactivity** : Human,Mouse,Rat**Host species** : Rabbit**Background**

Many vertebrate homeo box-containing genes have been identified on the basis of their sequence similarity with Drosophila developmental genes. Members of the Dlx gene family contain a homeobox that is related to that of Distal-less (Dll), a gene expressed in the head and limbs of the developing fruit fly. The Distal-less (Dlx) family of genes comprises at least 6 different members, DLX1-DLX6. The DLX proteins are postulated to play a role in forebrain and craniofacial development. Three transcript variants have been described for this gene, however, the full length nature of one variant has not been described. Studies of the two splice variants revealed that one encoded isoform functions as a repressor of the beta-globin gene while the other isoform lacks that function. [provided by RefSeq, Jul 2008]

Immunogen

A synthetic peptide of human Dlx4

Gene ID

1748

Swiss Prot

Q92988

Synonyms

BP1; DLX7; DLX8; DLX9; OFC15

Reactivity

Human,Mouse,Rat

Application

WB, IHC-P, ICC/IF, IP

Recommended dilution

WB: 1:1000-1:5000

IHC-P: 1:100-1:200

ICC/IF: 1:100-1:200

IP: 1:10-1:100

Calculated MW

26 kDa

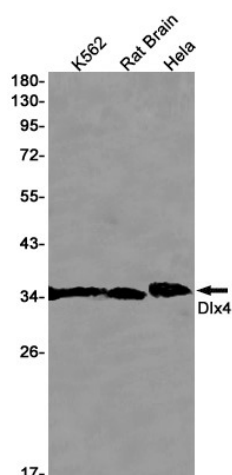
Observed MW

35 kDa

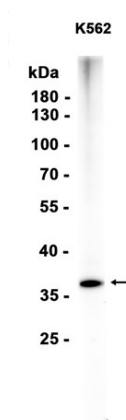
Host species

Rabbit

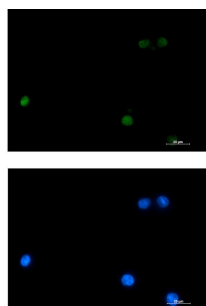
Clonality	Monoclonal
Clonality No.	DGR15006
Isotype	IgG
Purity	Affinity Purification
Conjugation	Un-conjugated
Storage Stability	Store at -20°C. Supplied in 50mM Tris-Glycine(pH 7.4), 0.15M NaCl, 40% Glycerol, 0.01% sodium azide and 0.05% BSA. Stable for 12 months from date of receipt.



Western blot detection of Dlx4 in K562, Rat Brain, HeLa cell lysates using Dlx4 antibody (1:1000 diluted).



Western blot analysis of extracts from K562 cells using db12320 at 1:100.



Immunofluorescent analysis of K562 cells using db12320 antibody (green), and DAPI (blue).