

Recombinant

DGRmAb®

## SAE1 (DGR15100) Rabbit mAb

db13122

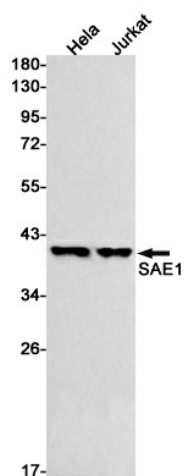
Package : 10µL 20µL 50µL 100µL

**Product Name** : SAE1 (DGR15100) Rabbit mAb**Cat.No.:** db13122**Synonyms** : AOS1; SUA1; UBLE1A; HSPC140**Application** : WB, ICC/IF**Reactivity** : Human,Mouse**Host species** : Rabbit

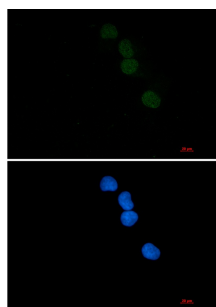
<b>Background</b>	Posttranslational modification of proteins by the addition of the small protein SUMO (see SUMO1; MIM 601912), or sumoylation, regulates protein structure and intracellular localization. SAE1 and UBA2 (MIM 613295) form a heterodimer that functions as a SUMO-activating enzyme for the sumoylation of proteins (Okuma et al., 1999 [PubMed 9920803]).[supplied by OMIM, Mar 2010]
<b>Immunogen</b>	A synthetic peptide of human SAE1
<b>Gene ID</b>	10055
<b>Swiss Prot</b>	Q9UBE0
<b>Synonyms</b>	AOS1; SUA1; UBLE1A; HSPC140
<b>Reactivity</b>	Human,Mouse
<b>Application</b>	WB, ICC/IF
<b>Recommended dilution</b>	WB: 1:1000-1:5000 ICC/IF: 1:100
<b>Calculated MW</b>	39 kDa
<b>Observed MW</b>	39 kDa
<b>Host species</b>	Rabbit
<b>Clonality</b>	Monoclonal
<b>Clonality No.</b>	DGR15100
<b>Isotype</b>	IgG
<b>Purity</b>	Affinity Purification
<b>Conjugation</b>	Un-conjugated

## Storage Stability

Store at -20°C. Supplied in 50mM Tris-Glycine(pH 7.4), 0.15M NaCl, 40% Glycerol, 0.01% sodium azide and 0.05% BSA. Stable for 12 months from date of receipt.



Western blot detection of SAE1 in HeLa, Jurkat cell lysates using SAE1 antibody(1:500 diluted).



Immunofluorescent analysis of HeLa cells using db13122 antibody (green), and DAPI (blue).