

Recombinant

DGRmAb®

APG5L/ATG5 (DGR15109) Rabbit mAb

db13177

Package : 10µL 20µL 50µL 100µL

Product Name : APG5L/ATG5 (DGR15109) Rabbit mAb**Cat.No.:** db13177**Synonyms** : ASP; APG5; APG5L; hAPG5; SCAR25; APG5-LIKE**Application** : WB, IHC-P, ICC/IF, IP**Reactivity** : Human,Mouse,Rat**Host species** : Rabbit**Background**

The protein encoded by this gene, in combination with autophagy protein 12, functions as an E1-like activating enzyme in a ubiquitin-like conjugating system. The encoded protein is involved in several cellular processes, including autophagic vesicle formation, mitochondrial quality control after oxidative damage, negative regulation of the innate antiviral immune response, lymphocyte development and proliferation, MHC II antigen presentation, adipocyte differentiation, and apoptosis. Several transcript variants encoding different protein isoforms have been found for this gene. [provided by RefSeq, Sep 2015]

Immunogen

A synthetic peptide of human APG5L/ATG5

Gene ID

9474

Swiss Prot

Q9H1Y0

Synonyms

ASP; APG5; APG5L; hAPG5; SCAR25; APG5-LIKE

Reactivity

Human,Mouse,Rat

Application

WB, IHC-P, ICC/IF, IP

Recommended dilution

WB: 1:1000-1:5000

IHC-P: 1:100-1:200

ICC/IF: 1:100-1:200

IP: 1:10-1:100

Calculated MW

33 kDa

Observed MW

55 kDa

Host species

Rabbit

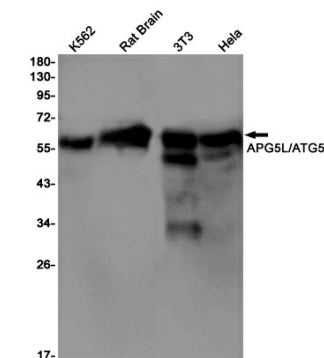
Clonality

Monoclonal

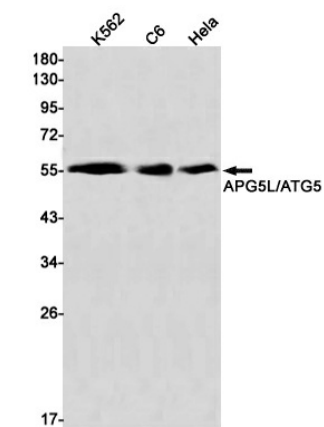
Clonality No.

DGR15109

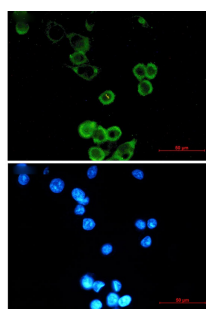
Isotype	IgG
Purity	Affinity Purification
Conjugation	Un-conjugated
Storage Stability	Store at -20°C. Supplied in 50mM Tris-Glycine(pH 7.4), 0.15M NaCl, 40% Glycerol, 0.01% sodium azide and 0.05% BSA. Stable for 12 months from date of receipt.



Western blot detection of APG5L/ATG5 in K562,Rat Brain,3T3,Hela cell lysates using APG5L/ATG5 antibody(1:1000 diluted).



Western blot detection of APG5L/ATG5 Rabbit pA in K562,C6,Hela cell lysates using APG5L/ATG5 Rabbit pA(1:1000 diluted).



Immunofluorescent analysis of MCF-7 cells using db13177 antibody (green), and DAPI (blue).