

Recombinant

DGRmAb®

FBXL11 (DGR15147) Rabbit mAb

db14272

Package : 10µL 20µL 50µL 100µL

Product Name : FBXL11 (DGR15147) Rabbit mAb**Cat.No.:** db14272**Synonyms :** FBL7; CXXC8; FBL11; FBXL11; JHDM1A; LILINA**Application :** WB, IHC-P, ICC/IF, IP**Reactivity :** Human,Mouse,Rat**Host species :** Rabbit**Background**

This gene encodes a member of the F-box protein family which is characterized by an approximately 40 amino acid motif, the F-box. The F-box proteins constitute one of the four subunits of ubiquitin protein ligase complex called SCFs (SKP1-cullin-F-box), which function in phosphorylation-dependent ubiquitination. The F-box proteins are divided into 3 classes: Fbws containing WD-40 domains, Fbls containing leucine-rich repeats, and Fbxs containing either different protein-protein interaction modules or no recognizable motifs. The protein encoded by this gene belongs to the Fbls class and, in addition to an F-box, contains at least six highly degenerated leucine-rich repeats. This family member plays a role in epigenetic silencing. It nucleates at CpG islands and specifically demethylates both mono- and di-methylated lysine-36 of histone H3. Alternative splicing results in multiple transcript variants. [provided by RefSeq, Jan 2012]

Immunogen

A synthetic peptide of human FBXL11

Gene ID

22992

Swiss Prot

Q9Y2K7

Synonyms

FBL7; CXXC8; FBL11; FBXL11; JHDM1A; LILINA

Reactivity

Human,Mouse,Rat

Application

WB, IHC-P, ICC/IF, IP

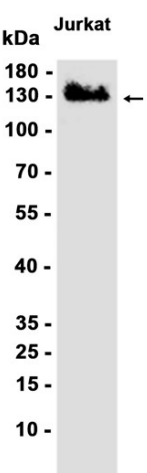
Recommended dilutionWB: 1:1000
IHC-P: 1:100-1:200
ICC/IF: 1:500-1:1000
IP: 1:50-1:100**Calculated MW**

133 kDa

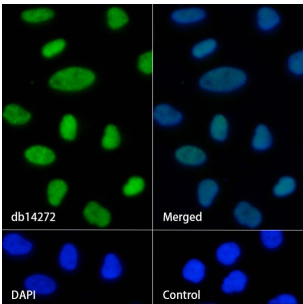
Observed MW

133 kDa

Host species	Rabbit
Clonality	Monoclonal
Clonality No.	DGR15147
Isotype	IgG
Purity	Affinity Purification
Conjugation	Un-conjugated
Storage Stability	Store at -20°C. Supplied in 50mM Tris-Glycine(pH 7.4), 0.15M NaCl, 40% Glycerol, 0.01% sodium azide and 0.05% BSA. Stable for 12 months from date of receipt.



Western blot analysis of extracts from Jurkat cells using db14272 at 1:1000.



Immunofluorescence analysis of HeLa cells labelling FBXL11 with db14272.

The cells were fixed with 4% PFA (10min, RT) followed by treatment with 0.1% Triton X-100 (10min, RT), and blocked in 1% BSA/10% normal goat serum/0.3M glycine in 0.1% PBS-Tween 20 for 1h. The cells were then incubate with db14272 (1:500) at room temprature for 1h, followed by a further incubation at room temperature for 45min with Goat Anti Rabbit IgG (H+L)-AF488 (db10005, shown in green). Nuclear DNA was labeled in blue with DAPI.

Control: Secondary antibody only.