

Recombinant

DGRmAb®

TXNRD2 (DGR15171) Rabbit mAb

db14072

Package : 10µL 20µL 50µL 100µL

Product Name : TXNRD2 (DGR15171) Rabbit mAb**Cat.No.:** db14072**Synonyms** : TR; TR3; SELZ; TRXR2; TR-BETA**Application** : WB, IHC-P**Reactivity** : Human,Mouse,Rat**Host species** : Rabbit**Background**

The protein encoded by this gene belongs to the pyridine nucleotide-disulfide oxidoreductase family, and is a member of the thioredoxin (Trx) system. Three thioredoxin reductase (TrxR) isozymes are found in mammals. TrxRs are selenocysteine-containing flavoenzymes, which reduce thioredoxins, as well as other substrates, and play a key role in redox homeostasis. This gene encodes a mitochondrial form important for scavenging reactive oxygen species in mitochondria. It functions as a homodimer containing FAD, and selenocysteine (Sec) at the active site. Sec is encoded by UGA codon that normally signals translation termination. The 3' UTRs of selenoprotein mRNAs contain a conserved stem-loop structure, the Sec insertion sequence (SECIS) element, which is necessary for the recognition of UGA as a Sec codon rather than as a stop signal. Alternatively spliced transcript variants encoding different isoforms, including a few localized in the cytosol and some lacking the C-terminal Sec residue, have been found for this gene. [provided by RefSeq, Jun 2017]

Immunogen

A synthetic peptide of human TXNRD2

Gene ID

10587

Swiss Prot

Q9NNW7

Synonyms

TR; TR3; SELZ; TRXR2; TR-BETA

Reactivity

Human,Mouse,Rat

Application

WB, IHC-P

Recommended dilutionWB: 1:1000-1:5000
IHC-P: 1:50-1:100**Calculated MW**

57 kDa

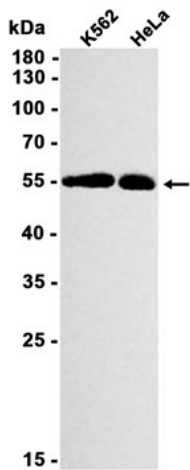
Observed MW

57 kDa

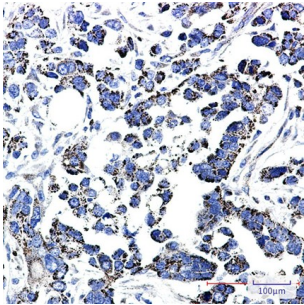
Host species

Rabbit

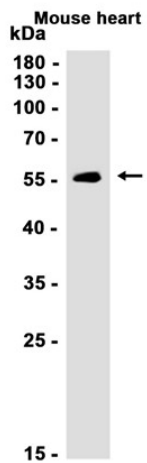
Clonality	Monoclonal
Clonality No.	DGR15171
Isotype	IgG
Purity	Affinity Purification
Conjugation	Un-conjugated
Storage Stability	Store at -20°C. Supplied in 50mM Tris-Glycine(pH 7.4), 0.15M NaCl, 40% Glycerol, 0.01% sodium azide and 0.05% BSA. Stable for 12 months from date of receipt.



Western blot analysis of extracts from K562, HeLa cells using db14072 at 1:1000.



Immunohistochemical analysis of paraffin-embedded human Cholangiocarcinoma using db14072 antibody.



Western blot analysis of extracts from Mouse heart tissue using db14072 at 1:1000.