

Recombinant

DGRmAb®

**TRIM21 (DGR15264) Rabbit mAb**

db14897

Package : 10µL 20µL 50µL 100µL

**Product Name :** TRIM21 (DGR15264) Rabbit mAb**Cat.No.:** db14897**Synonyms :** SSA; RO52; SSA1; RNF81; Ro/SSA**Application :** WB, IHC-P**Reactivity :** Human,Mouse,Rat**Host species :** Rabbit**Background**

This gene encodes a member of the tripartite motif (TRIM) family. The TRIM motif includes three zinc-binding domains, a RING, a B-box type 1 and a B-box type 2, and a coiled-coil region. The encoded protein is part of the RoSSA ribonucleoprotein, which includes a single polypeptide and one of four small RNA molecules. The RoSSA particle localizes to both the cytoplasm and the nucleus. RoSSA interacts with autoantigens in patients with Sjogren syndrome and systemic lupus erythematosus. Alternatively spliced transcript variants for this gene have been described but the full-length nature of only one has been determined. [provided by RefSeq, Jul 2008]

**Immunogen**

Recombinant protein of human TRIM21

**Gene ID**

6737

**Swiss Prot**

P19474

**Synonyms**

SSA; RO52; SSA1; RNF81; Ro/SSA

**Reactivity**

Human,Mouse,Rat

**Application**

WB, IHC-P

**Recommended dilution**

WB: 1:1000

IHC-P: 1:100-1:500

**Calculated MW**

54 kDa

**Observed MW**

50 kDa

**Host species**

Rabbit

**Clonality**

Monoclonal

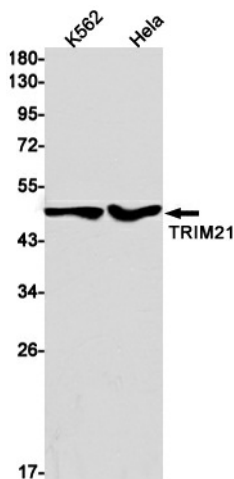
**Clonality No.**

DGR15264

**Isotype**

IgG

Purity	Affinity Purification
Conjugation	Un-conjugated
Storage Stability	Store at -20°C. Supplied in 50mM Tris-Glycine(pH 7.4), 0.15M NaCl, 40% Glycerol, 0.01% sodium azide and 0.05% BSA. Stable for 12 months from date of receipt.



Western blot detection of TRIM21 in K562,HeLa cell lysates using TRIM21 antibody(1:1000 diluted).