

Recombinant

DGRmAb®

## Integrin beta 5 (DGR15300) Rabbit mAb

db11268

Package : 10µL 20µL 50µL 100µL

**Product Name** : Integrin beta 5 (DGR15300) Rabbit mAb**Cat.No.:** db11268**Synonyms** : ITGB5**Application** : WB**Reactivity** : Human,Mouse,Rat**Host species** : Rabbit**Background**

This gene encodes a beta subunit of integrin, which can combine with different alpha chains to form a variety of integrin heterodimers. Integrins are integral cell-surface receptors that participate in cell adhesion as well as cell-surface mediated signaling. The alphav beta5 integrin is involved in adhesion to vitronectin. [provided by RefSeq, Aug 2017]

**Immunogen**

Recombinant protein of human Integrin beta 5

**Gene ID**

3693

**Swiss Prot**

P18084

**Synonyms**

ITGB5

**Reactivity**

Human,Mouse,Rat

**Application**

WB

**Recommended dilution**

WB: 1:1000

**Calculated MW**

88 kDa

**Observed MW**

88 kDa

**Host species**

Rabbit

**Clonality**

Monoclonal

**Clonality No.**

DGR15300

**Isotype**

IgG

**Purity**

Affinity Purification

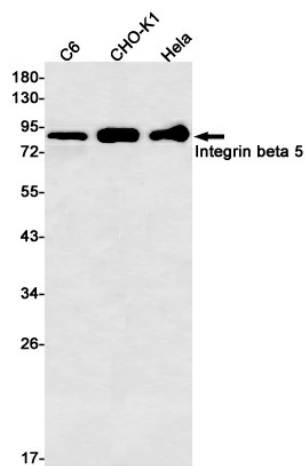
**Conjugation**

Un-conjugated

**Storage Stability**

Store at -20°C. Supplied in 50mM Tris-Glycine(pH 7.4), 0.15M NaCl, 40% Glycerol, 0.01% sodium

azide and 0.05% BSA. Stable for 12 months from date of receipt.



Western blot detection of Integrin beta 5 in C6,CHO-K1,HeLa cell lysates using Integrin beta 5 antibody(1:500 diluted).